











6 Durvalumab Plus Carboplatin/Paclitaxel Followed by Maintenance Durvalumab With or Without Olaparib as First-Line Treatment for Advanced Endometrial Cancer: The Phase III DUO-E Trial

Shannon N. Westin, MD, MPH¹ ; Kathleen Moore, MD²; Hye Sook Chon, MD³; Jung-Yun Lee, MD⁴ ; Jessica Thomes Pepin, MD⁵; Michael Sundborg, MD⁶; Ayelet Shai, MD, PhD⁷; Joseph de la Garza, MD⁸; Shin Nishio, MD⁹ ; Michael A. Gold, MD¹⁰; Ke Wang, MD¹¹; Kristi McIntyre, MD¹²; Todd D. Tillmanns, MD¹³; Stephanie V. Blank, MD¹⁴ ; Ji-Hong Liu, MD¹⁵; Michael McCollum, MD¹⁶; Fernando Contreras Mejia, MD¹⁷ ; Tadaaki Nishikawa, MD¹⁸ ; Kathryn Pennington, MD¹⁹; Zoltan Novak, MD, PhD²⁰; Andreia Cristina De Melo, MD²¹ ; Jalid Sehoul, MD²²; Dagmara Klasa-Mazurkiewicz, MD²³ ; Christos Papadimitriou, MD²⁴; Marta Gil-Martin, MD²⁵ ; Birute Brasiuniene, MD, PhD²⁶ ; Conor Donnelly, PhD²⁷; Paula Michelle del Rosario, MD²⁸; Xiaochun Liu, MD, PhD²⁹; and Els Van Nieuwenhuysen, MD³⁰; on behalf of the DUO-E Investigators

DOI <https://doi.org/10.1200/JCO.23.02132>

ABSTRACT

PURPOSE Immunotherapy and chemotherapy combinations have shown activity in endometrial cancer, with greater benefit in mismatch repair (MMR)–deficient (dMMR) than MMR–proficient (pMMR) disease. Adding a poly(ADP–ribose) polymerase inhibitor may improve outcomes, especially in pMMR disease.

METHODS This phase III, global, double–blind, placebo–controlled trial randomly assigned eligible patients with newly diagnosed advanced or recurrent endometrial cancer 1:1:1 to: carboplatin/paclitaxel plus durvalumab placebo followed by placebo maintenance (control arm); carboplatin/paclitaxel plus durvalumab followed by maintenance durvalumab plus olaparib placebo (durvalumab arm); or carboplatin/paclitaxel plus durvalumab followed by maintenance durvalumab plus olaparib (durvalumab + olaparib arm). The primary end points were progression–free survival (PFS) in the durvalumab arm versus control and the durvalumab + olaparib arm versus control.

RESULTS Seven hundred eighteen patients were randomly assigned. In the intention–to–treat population, statistically significant PFS benefit was observed in the durvalumab (hazard ratio [HR], 0.71 [95% CI, 0.57 to 0.89]; $P = .003$) and durvalumab + olaparib arms (HR, 0.55 [95% CI, 0.43 to 0.69]; $P < .0001$) versus control. Prespecified, exploratory subgroup analyses showed PFS benefit in dMMR (HR [durvalumab v control], 0.42 [95% CI, 0.22 to 0.80]; HR [durvalumab + olaparib v control], 0.41 [95% CI, 0.21 to 0.75]) and pMMR subgroups (HR [durvalumab v control], 0.77 [95% CI, 0.60 to 0.97]; HR [durvalumab + olaparib v control] 0.57; [95% CI, 0.44 to 0.73]); and in PD–L1–positive subgroups (HR [durvalumab v control], 0.63 [95% CI, 0.48 to 0.83]; HR [durvalumab + olaparib v control], 0.42 [95% CI, 0.31 to 0.57]). Interim overall survival results (maturity approximately 28%) were supportive of the primary outcomes (durvalumab v control: HR, 0.77 [95% CI, 0.56 to 1.07]; $P = .120$; durvalumab + olaparib v control: HR, 0.59 [95% CI, 0.42 to 0.83]; $P = .003$). The safety profiles of the experimental arms were generally consistent with individual agents.

CONCLUSION Carboplatin/paclitaxel plus durvalumab followed by maintenance durvalumab with or without olaparib demonstrated a statistically significant and clinically meaningful PFS benefit in patients with advanced or recurrent endometrial cancer.

ACCOMPANYING CONTENT

 Listen to the podcast by Dr Schapira, Dr Westin, and Dr Eskander at jcopodcast.libsyn.com

 Appendix

 Data Sharing Statement

 Data Supplement

 Protocol

Accepted October 14, 2023

Published October 21, 2023

J Clin Oncol 42:283-299

© 2023 by American Society of Clinical Oncology



[View Online Article](#)

Creative Commons Attribution
Non-Commercial No Derivatives
4.0 License

CONTEXT

Key Objective

Does the addition of the anti-PD-L1 antibody durvalumab to first-line platinum-based chemotherapy followed by maintenance durvalumab with or without the poly(ADP-ribose) polymerase (PARP) inhibitor olaparib improve outcomes in newly diagnosed and recurrent endometrial cancer compared with chemotherapy alone?

Knowledge Generated

DUO-E met its primary end points, with results indicating a statistically significant and clinically meaningful progression-free survival (PFS) benefit with the addition of durvalumab to standard first-line platinum-based chemotherapy followed by maintenance durvalumab with or without olaparib. The safety profiles observed in the experimental arms were generally consistent with individual agents.

Relevance (G. Fleming)

These data confirm a benefit of immune checkpoint inhibitor use in the front-line treatment of advanced or metastatic endometrial cancer, with PFS improvement seen, as in other trials, in the setting of both mismatch repair-deficient and mismatch repair-proficient disease. While reports of PARP inhibitor treatment in endometrial cancer have previously been lackluster, the DUO-E results open up promising avenues for exploration of PARP inhibitor maintenance therapy in some subsets of the disease.*

*Relevance section written by JCO Associate Editor Gini Fleming, MD.

INTRODUCTION

Endometrial cancer is one of the most common cancers among women worldwide, and the incidence is rising.¹ Standard of care for newly diagnosed advanced or recurrent endometrial cancer includes platinum-based chemotherapy with carboplatin plus paclitaxel.^{2,3} Although patients often demonstrate initial sensitivity to platinum-based chemotherapy, most subsequently experience disease progression and require additional lines of chemotherapy.⁴⁻⁶

The RUBY and NRG-GY018 trials recently demonstrated efficacy with immune checkpoint inhibitors in combination with chemotherapy as first-line therapy in patients with primary advanced or recurrent endometrial cancer,^{7,8} building on existing evidence for immunotherapy in endometrial cancer.⁹⁻¹² The results from RUBY led to approval of dostarlimab in combination with carboplatin and paclitaxel followed by dostarlimab alone for the treatment of mismatch repair (MMR)-deficient (dMMR) or microsatellite instability-high, primary advanced or recurrent endometrial cancer in the United States.¹³ A high unmet need for new therapies remains, especially in patients with MMR-proficient (pMMR) tumors, who comprise approximately 75% of patients with endometrial cancer.¹⁴

We hypothesized that combining pharmacologic inhibition of poly(ADP-ribose) polymerase (PARP) with an immune checkpoint inhibitor may improve outcomes in endometrial cancer, including in patients with pMMR tumors.¹⁵⁻¹⁸

DUO-E/GOG-3041/ENGOT-EN10 investigated whether the addition of the anti-PD-L1 antibody durvalumab to carboplatin

plus paclitaxel, followed by maintenance durvalumab with or without the addition of the PARP inhibitor olaparib, improved outcomes in newly diagnosed advanced or recurrent endometrial cancer.

METHODS

Trial Design and Patients

The DUO-E/GOG-3041/ENGOT-EN10 trial (ClinicalTrials.gov identifier: [NCT04269200](https://clinicaltrials.gov/ct2/show/study/NCT04269200)) was a randomized, double-blind, placebo-controlled multicenter phase III trial conducted in 22 countries. Eligible patients were age 18 years and older with newly diagnosed advanced (International Federation of Gynecology and Obstetrics [FIGO] measurable stage III/newly diagnosed stage IV [2009 staging system]) or recurrent endometrial cancer of epithelial histology (excluding sarcomas). For recurrent disease, the potential for cure by surgery was poor, and previous systemic anticancer treatment was allowed only if administered in the adjuvant setting and there was ≥ 12 months between last dose and subsequent relapse. Patients were required to have known MMR status (determined before random assignment; Data Supplement, online only). Full eligibility criteria are provided in the Data Supplement.

Random Assignment and Study Treatment

Patients were randomly assigned 1:1:1 to three treatment arms (Data Supplement, Fig S1), stratified by MMR status (proficient v deficient), disease status (newly diagnosed v recurrent), and geographic region (Asia v non-Asia). Patients

received platinum-based chemotherapy (carboplatin: area under the curve, 5 or 6 mg/mL/min once every 3 weeks for 6 cycles; paclitaxel: 175 mg/m² once every 3 weeks for 6 cycles) plus durvalumab placebo intravenously once every 3 weeks for six cycles, followed by maintenance durvalumab placebo intravenously once every 4 weeks plus olaparib placebo tablets twice daily (control arm); platinum-based chemotherapy plus durvalumab 1,120 mg intravenously once every 3 weeks for six cycles, followed by maintenance durvalumab 1,500 mg intravenously once every 4 weeks plus olaparib placebo tablets twice daily (durvalumab arm); or platinum-based chemotherapy plus durvalumab 1,120 mg intravenously once every 3 weeks for six cycles, followed by maintenance durvalumab 1,500 mg intravenously once every 4 weeks plus olaparib 300 mg tablets twice daily (durvalumab + olaparib arm).

Treatment continued until radiologic disease progression (RECIST v1.1, investigator-assessed), unacceptable toxicity, or other discontinuation criteria were met. Patients without objective disease progression during the chemotherapy phase who met other prespecified requirements (Data Supplement) were permitted to start maintenance therapy.

Study End Points

The dual primary end points were investigator-assessed progression-free survival (PFS), defined as the time from random assignment to objective disease progression (RECIST v1.1) or death, for both the durvalumab arm versus control and the durvalumab + olaparib arm versus control. Prespecified subgroup and sensitivity analyses of PFS were conducted (Data Supplement). A prespecified, exploratory analysis of PFS in the durvalumab + olaparib versus durvalumab arms was conducted.

Secondary end points included overall survival (OS), patient-reported outcomes (using the European Organisation for Research and Treatment of Cancer [EORTC] Core Quality of Life Questionnaire [QLQ-C30]), and safety.

Assessments

Tumor assessments were performed at baseline, every 9 weeks (± 1 week) for 18 weeks, and every 12 weeks (± 1 week) thereafter until objective radiologic disease progression (RECIST v1.1). After disease progression, patients were assessed every 12 weeks for second progression and every 2 months for survival.

Adverse events (AEs) were graded using the National Cancer Institute Common Terminology Criteria for Adverse Events (CTCAE; v5.0) and monitored throughout treatment and for 30 days after the last dose of olaparib and 90 days after the last dose of durvalumab, whichever was later. Events of myelodysplastic syndrome (MDS), AML, and new primary malignancies were reported throughout the study and during survival follow-up.

Trial Oversight

The trial adhered to the Declaration of Helsinki, Good Clinical Practice Guidelines, and the AstraZeneca policy of bioethics.¹⁹ All patients provided written informed consent. The trial was designed and sponsored by AstraZeneca in collaboration with the authors and academic groups under the GOG Foundation and the European Network of Gynecological Oncological Trial (ENGOT) groups. AstraZeneca was responsible for overseeing the collection, analysis, and interpretation of data. Authors had full access to the data, wrote the manuscript, and attest to the accuracy and completeness of data and the fidelity of the trial to the protocol. Medical writing assistance was funded by AstraZeneca.

Statistical Methods

The planned sample size was approximately 699 patients. The primary analysis of PFS was planned when both criteria were met: 64% maturity (approximately 299 events) for the durvalumab versus control comparison and 60% maturity (approximately 281 events) for durvalumab + olaparib versus control. Assuming a median PFS of 12 months for the control and an average true PFS hazard ratio (HR) of 0.70 for durvalumab versus control and 0.55 for durvalumab + olaparib versus control, the study had 80% and >99% power to demonstrate a statistically significant difference at the overall two-sided significance level of 2.5% for each comparison, respectively. The first interim analysis of OS was performed at the time of the primary PFS analysis.

A multiple testing procedure with gatekeeping strategy was used to strongly control the type I error at 5% (two-sided) across the key efficacy end points (PFS and OS) for the durvalumab + olaparib and durvalumab versus control comparisons (Data Supplement, Fig S2).

Efficacy data were summarized and analyzed in the intention-to-treat population and safety data in the safety analysis set (all randomly assigned patients who received at least one dose of investigational treatment: durvalumab/placebo or olaparib/placebo); for the maintenance phase, safety data were summarized in patients who received at least one dose of olaparib/placebo maintenance treatment.

The primary PFS analysis for each comparison was performed separately using a stratified log-rank test for generation of *P* values, with HRs and 95% CIs estimated using a stratified Cox proportional hazards model. Kaplan-Meier plots were presented by treatment arm and used to estimate the median PFS and the proportion of patients alive and progression-free at landmark time points (6, 12, and 18 months). The proportional hazards assumption was tested by fitting a Cox model with a treatment-by-time interaction (Data Supplement). Analyses of secondary time-to-event end points used similar methods.

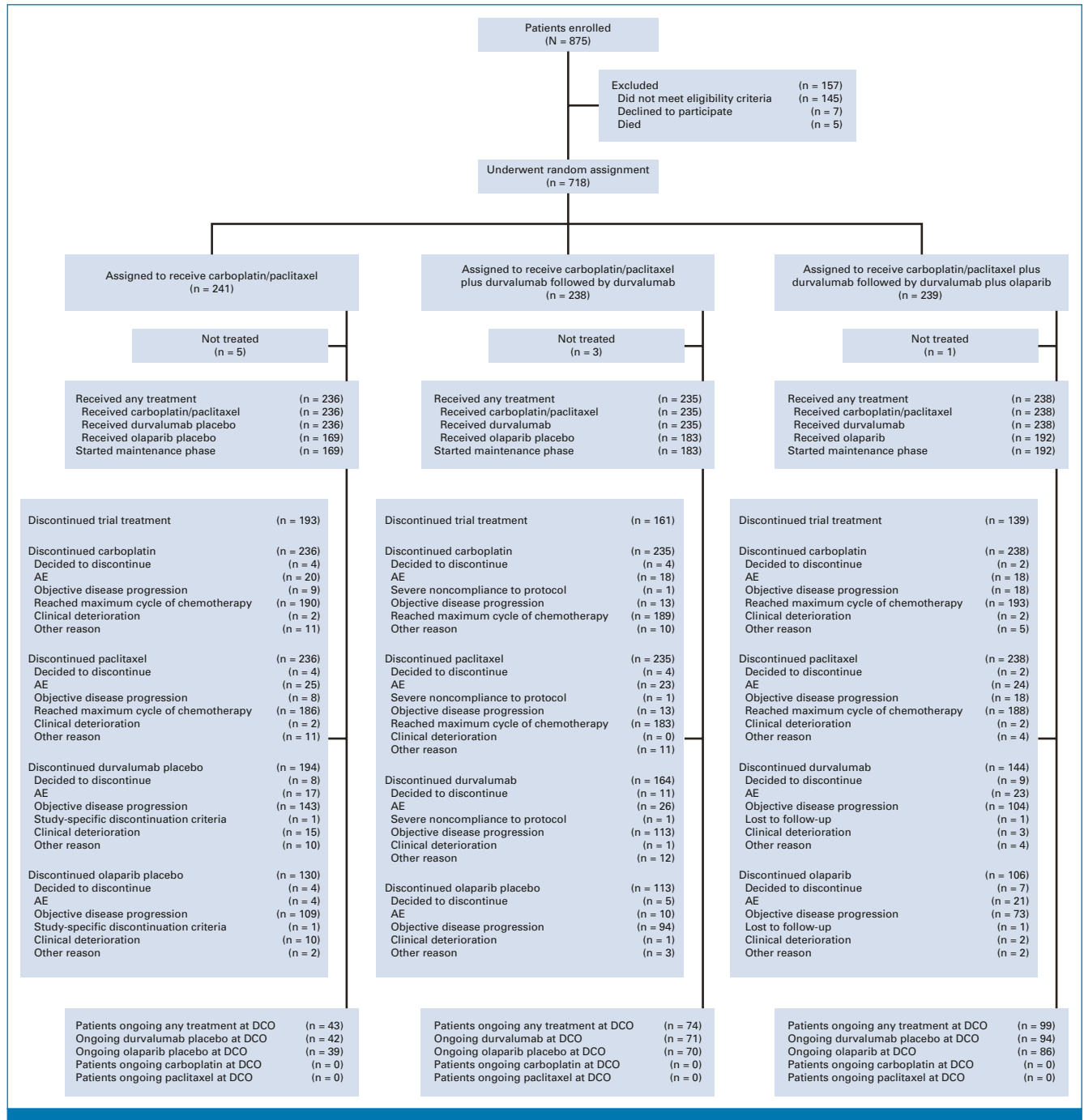


FIG 1. CONSORT diagram of patients. AE, adverse event; DCO, data cutoff.

RESULTS

Patients

From June 2, 2020, through April 20, 2022, 718 patients were randomly assigned: 241, 238, and 239 to the control, durvalumab, and durvalumab + olaparib arms, respectively. Of those randomly assigned, 236 patients (97.9%) in the control arm, 235 (98.7%) in the durvalumab arm, and 238 (99.6%) in the durvalumab + olaparib arm received any study treatment (safety analysis set), and 169 (70.1%),

183 (76.9%), and 192 (80.3%), respectively, received olaparib/placebo maintenance (Fig 1).

Baseline characteristics were generally balanced across treatment arms (Table 1) and representative of patients with newly diagnosed advanced or recurrent endometrial cancer (Data Supplement, Table S1). In the control, durvalumab, and durvalumab + olaparib arms, 80%, 81%, and 80% of patients, respectively, had pMMR tumors, 28%, 29%, and 28%, respectively, were from Asia, and 48%, 47%, and 48%, respectively, had newly diagnosed disease.

TABLE 1. Patient Baseline Characteristics

Characteristic	Durvalumab + Olaparib Arm (n = 239)	Durvalumab Arm (n = 238)	Control Arm (n = 241)
Age, years, median (range)	63 (27-86)	64 (22-84)	64 (31-85)
Geographic region, ^a No. (%)			
Asia ^b	67 (28.0)	68 (28.6)	68 (28.2)
Non-Asia	172 (72.0)	170 (71.4)	173 (71.8)
Race, No. (%)			
White	133 (55.6)	136 (57.1)	143 (59.3)
Asian	70 (29.3)	72 (30.3)	73 (30.3)
Black/African American	14 (5.9)	11 (4.6)	10 (4.1)
American Indian or Alaska Native	6 (2.5)	6 (2.5)	0
Native Hawaiian or Other Pacific Islander	1 (0.4)	0	2 (0.8)
Other	12 (5.0)	8 (3.4)	10 (4.1)
Not reported	3 (1.3)	5 (2.1)	3 (1.2)
Ethnicity, No. (%)			
Not Hispanic or Latino	206 (86.2)	208 (87.4)	218 (90.5)
Hispanic or Latino	32 (13.4)	28 (11.8)	20 (8.3)
Missing	1 (0.4)	2 (0.8)	3 (1.2)
ECOG performance status, No. (%)			
0	166 (69.5)	156 (65.5)	156 (64.7)
1	73 (30.5)	81 (34.0)	85 (35.3)
Disease status, No. (%)			
Recurrent ^a	125 (52.3)	125 (52.5)	126 (52.3)
Newly diagnosed ^a	114 (47.7)	113 (47.5)	115 (47.7)
FIGO stage in newly diagnosed patients ^c			
I	1 (0.4)	0	0
II	0	0	1 (0.4)
III	12 (5.0)	17 (7.1)	12 (5.0)
IV	99 (41.4)	96 (40.3)	101 (41.9)
Histology type, ^d No. (%)			
Endometrioid	152 (63.6)	141 (59.2)	139 (57.7)
Serous	42 (17.6)	58 (24.4)	54 (22.4)
Carcinosarcoma	18 (7.5)	12 (5.0)	21 (8.7)
Mixed, epithelial	9 (3.8)	9 (3.8)	11 (4.6)
Clear cell	8 (3.3)	4 (1.7)	7 (2.9)
Undifferentiated	5 (2.1)	4 (1.7)	3 (1.2)
Mucinous	0	1 (0.4)	0
Other	5 (2.1)	9 (3.8)	6 (2.5)
MMR status, ^{a,e} No. (%)			
Proficient	191 (79.9)	192 (80.7)	192 (79.7)
Deficient	48 (20.1)	46 (19.3)	49 (20.3)
HRRm status, ^f No. (%)			
HRRm	39 (16.3)	26 (10.9)	32 (13.3)
Non-HRRm	141 (59.0)	138 (58.0)	132 (54.8)
Unknown	59 (24.7)	74 (31.1)	77 (32.0)
PD-L1 expression, ^g No. (%)			
Positive	150 (62.8)	170 (71.4)	163 (67.6)
Negative	82 (34.3)	61 (25.6)	75 (31.1)
Unknown	7 (2.9)	7 (2.9)	3 (1.2)
Previous chemotherapy, No. (%)			
Yes	54 (22.6)	51 (21.4)	51 (21.2)

(continued on following page)

Downloaded from ascopubs.org by 158.129.162.194 on September 13, 2024 from 158.129.162.194
Copyright © 2024 American Society of Clinical Oncology. All rights reserved.

TABLE 1. Patient Baseline Characteristics (continued)

Characteristic	Durvalumab + Olaparib Arm (n = 239)	Durvalumab Arm (n = 238)	Control Arm (n = 241)
No	185 (77.4)	187 (78.6)	190 (78.8)
Previous surgery, No. (%)			
Yes	207 (86.6)	205 (86.1)	202 (83.8)
No	32 (13.4)	33 (13.9)	39 (16.2)
Previous radiotherapy, No. (%)			
Yes ^h	85 (35.6)	73 (30.7)	71 (29.5)

Abbreviations: ECOG, Eastern Cooperative Oncology Group; FIGO, International Federation of Gynecology and Obstetrics; HRRm, homologous recombination repair mutation; MMR, mismatch repair; TAP, tumor area positivity.

^aStratification factors (MMR status [proficient v deficient], disease status [newly diagnosed v recurrent], and geographic region [Asia v non-Asia]) are per the randomization code.

^bIncludes China, Hong Kong, India, Japan, Republic of Korea, and Singapore. Two patients in India were stratified in error to the Asia subgroup.

^cFIGO stage was determined by electronic case report form. Reported as a percentage of the total number of patients in each arm.

^dPathology-related disease characteristics were collected at the time of primary diagnosis of disease under investigation.

^eMMR status was evaluated using the Ventana MMR Rx/Dx panel (Roche Diagnostics, Rotkreuz, Switzerland).

^fHRRm status was evaluated using the FoundationOne CDx next-generation sequencing assay (Foundation Medicine, Inc, Cambridge, MA). A positive HRRm status (HRRm) was defined as a sample with a pathogenic mutation in any of the following prespecified genes: *ATM*, *BRCA1*, *BRCA2*, *BARD1*, *BRIP1*, *CDK12*, *CHEK1*, *CHEK2*, *FANCL*, *PALB2*, *RAD51B*, *RAD51C*, *RAD51D*, and *RAD54L*. A negative HRRm status (non-HRRm) was defined as a sample with no pathogenic mutations in any of the prespecified genes. Unknown HRRm status included patients recruited in China where HRR testing was not performed and patients who withdrew consent or due to sample unavailability.

^gPD-L1 expression was assessed using the Ventana SP263 immunohistochemical assay (Roche Diagnostics). PD-L1-positive was defined as TAP $\geq 1\%$. PD-L1-negative was defined as TAP $< 1\%$. Unknown included patients who withdrew consent or due to sample unavailability.

^hOnly yes reported.

Efficacy

At the data cutoff date (April 12, 2023), there were 312 PFS events (65% maturity) for the durvalumab versus control comparison and 299 PFS events (62% maturity) for the durvalumab + olaparib versus control comparison. The median (range) duration of follow-up in patients censored for PFS was 12.6 months (0.0–31.6) in the control arm, 15.4 months (0.0–29.1) in the durvalumab arm, and 15.4 months (0.0–31.7) in the durvalumab + olaparib arm.

In the intention-to-treat population, the durvalumab arm had a statistically significant 29% lower risk of disease progression or death versus control (HR, 0.71 [95% CI, 0.57 to 0.89]; $P = .003$; median PFS 10.2 v 9.6 months; Fig 2A; Table 2). The durvalumab + olaparib arm had a statistically significant 45% lower risk of disease progression or death versus control (HR, 0.55 [95% CI, 0.43 to 0.69]; $P < .0001$; median PFS 15.1 v 9.6 months; Fig 2A; Table 2). The PFS Kaplan-Meier curves overlap until approximately 6 months, after which time there is a clear and sustained separation that favors both investigational treatment arms compared with control (Fig 2A). This delayed separation was expected because of the known delayed treatment effect for durvalumab, as well as the fact that olaparib maintenance therapy only started after completion of chemotherapy. The delay in separation of the curves suggested nonproportionality ($P = .018$ and $P = .03$ for the durvalumab v control and durvalumab + olaparib v control comparisons, respectively). In the presence of nonproportional hazards, the overall PFS HR is to be interpreted as an average estimate of the observed

benefit. Rates at specific time points and the median PFS values are shown in Table 2. A sensitivity analysis of PFS by blinded independent central review was consistent with the results by investigator assessment for both the durvalumab versus control (HR, 0.74 [95% CI, 0.58 to 0.94]) and durvalumab + olaparib versus control (HR, 0.55 [95% CI, 0.42 to 0.70]) comparisons (Data Supplement, Fig S3). In a pre-defined, exploratory analysis of investigator-assessed PFS in the durvalumab + olaparib versus durvalumab arms, the HR was 0.78 (95% CI, 0.61 to 0.99; median PFS 15.1 v 10.2 months; Table 2). The first interim analysis of OS was conducted at the time of the primary PFS analysis, at which point 199 (28%) deaths had occurred in the intention-to-treat population. The median (range) duration of follow-up in patients censored for OS was 18.6 months (0.5–32.9) in the control arm, 18.4 months (2.1–33.0) in the durvalumab arm, and 18.7 months (1.1–33.4) in the durvalumab + olaparib arm. The HRs for both comparisons favored the investigational arms; however, neither comparison reached statistical significance at this first interim analysis of OS (durvalumab v control: HR, 0.77 [95% CI, 0.56 to 1.07]; $P = .120$; durvalumab + olaparib v control: HR, 0.59 [95% CI, 0.42 to 0.83]; $P = .003$, Fig 2B).

In prespecified exploratory subgroup analyses of PFS, all observed HR point estimates favored the durvalumab and durvalumab + olaparib arms versus control (Figs 3A and 3B). In the dMMR subgroup, the HRs for PFS were 0.42 (95% CI, 0.22 to 0.80, median PFS not reached [NR] v 7.0 months) for durvalumab versus control and 0.41 (95% CI, 0.21 to 0.75, median PFS 31.8 v 7.0 months) for durvalumab + olaparib

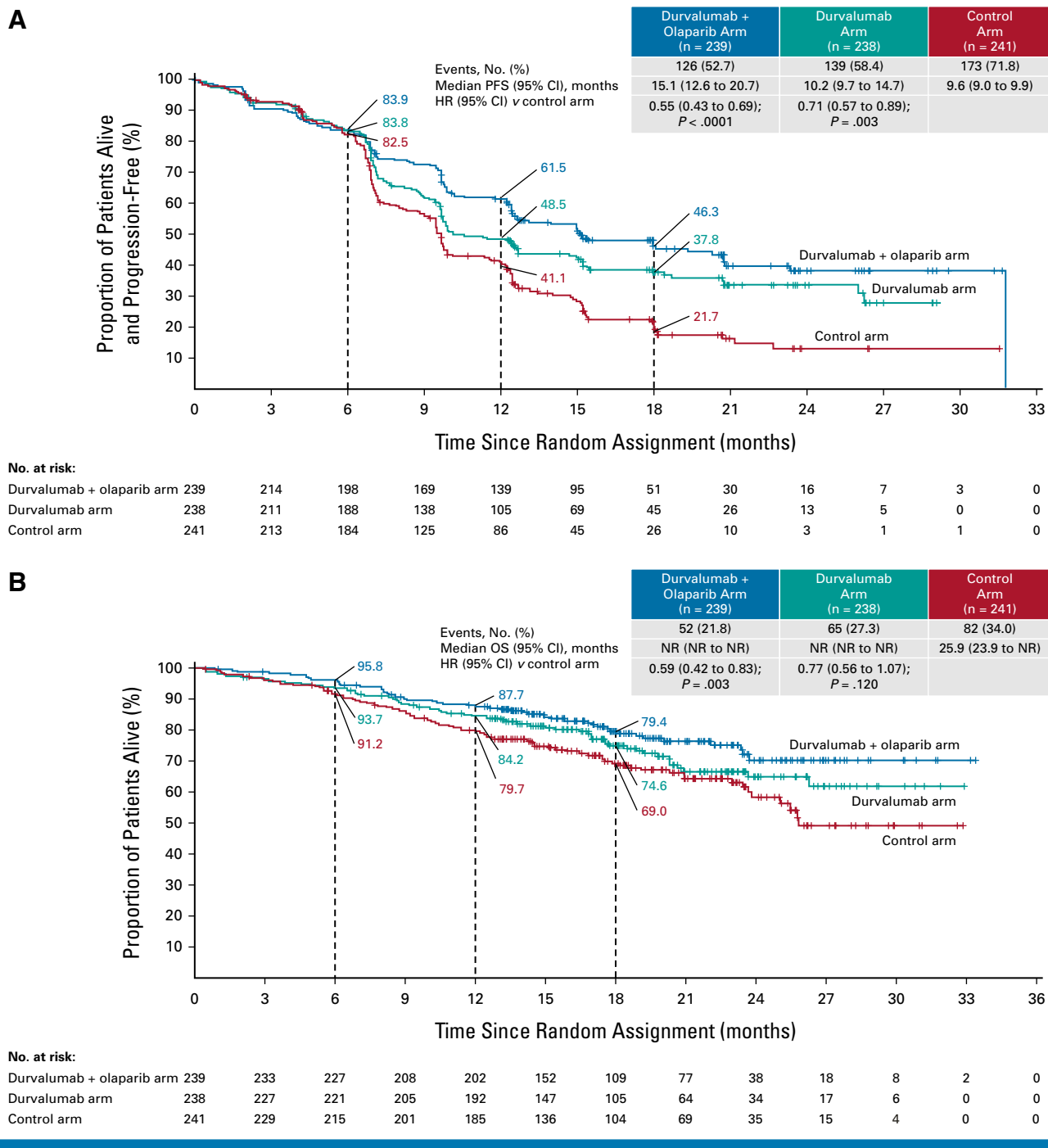


FIG 2. Intention-to-treat analyses of (A) PFS, as assessed by the investigator according to RECIST v1.1, and (B) OS. For the PFS analysis, the HRs and CIs were estimated from a Cox proportional hazards model stratified by MMR and disease status. For the OS analysis, the HRs and CIs were estimated from an unstratified Cox proportional hazards model. *P* values were calculated using a stratified log-rank test. Tick marks indicate a censored observation. Patients without an event were censored at the latest evaluable RECIST assessment. HR, hazard ratio; MMR, mismatch repair; NR, not reached; OS, overall survival; PFS, progression-free survival.

versus control (Table 2 and Fig 4A). In the pMMR subgroup, the HRs for PFS were 0.77 (95% CI, 0.60 to 0.97, median PFS 9.9 v 9.7 months) for durvalumab versus control and 0.57 (95% CI, 0.44 to 0.73, 15.0 v 9.7 months) for durvalumab + olaparib versus control (Table 2 and Fig 4B). Comparison of durvalumab + olaparib versus durvalumab by MMR status is

reported in Table 2. Subgroup analyses by PD-L1 status suggested a PFS benefit for both the durvalumab and durvalumab + olaparib arms compared with control in the PD-L1–positive subgroup (defined as tumor area positivity [TAP] ≥1%); the HRs for PFS were 0.63 (95% CI, 0.48 to 0.83) with median PFS 11.3 versus 9.5 months for the durvalumab

TABLE 2. PFS in the ITT Population and by MMR and PD-L1 Subgroup Status

Subgroup	Durvalumab + Olaparib Arm	Durvalumab Arm	Control Arm
ITT	n = 239	n = 238	n = 241
Progression events or death, No. (%)	126 (52.7)	139 (58.4)	173 (71.8)
PFS, months, median (95% CI) ^a	15.1 (12.6 to 20.7)	10.2 (9.7 to 14.7)	9.6 (9.0 to 9.9)
HR (95% CI) v control arm ^b	0.55 (0.43 to 0.69); <i>P</i> < .0001	0.71 (0.57 to 0.89); <i>P</i> = .003	
HR (95% CI) v durvalumab arm ^b	0.78 (0.61 to 0.99)		
6-month PFS rate, % (95% CI) ^a	83.9 (78.6 to 88.0)	83.8 (78.4 to 88.0)	82.5 (76.9 to 86.8)
12-month PFS rate, % (95% CI) ^a	61.5 (54.9 to 67.4)	48.5 (41.8 to 54.9)	41.1 (34.6 to 47.5)
18-month PFS rate, % (95% CI) ^a	46.3 (39.2 to 53.0)	37.8 (31.0 to 44.5)	21.7 (16.0 to 27.9)
dMMR	n = 48	n = 46	n = 49
Progression events or death, No. (%)	18 (37.5)	15 (32.6)	25 (51.0)
PFS, months, median (95% CI) ^a	31.8 (12.4 to NR)	NR (NR to NR)	7.0 (6.7 to 14.8)
HR (95% CI) v control arm ^c	0.41 (0.21 to 0.75)	0.42 (0.22 to 0.80)	
HR (95% CI) v durvalumab arm ^c	0.97 (0.49 to 1.98)		
6-month PFS rate, % (95% CI) ^a	87.2 (73.8 to 94.1)	90.6 (76.9 to 96.4)	73.1 (56.6 to 84.2)
12-month PFS rate, % (95% CI) ^a	70.0 (54.7 to 81.0)	67.9 (51.1 to 80.0)	43.3 (27.3 to 58.3)
18-month PFS rate, % (95% CI) ^a	62.7 (46.9 to 75.0)	67.9 (51.1 to 80.0)	31.7 (16.7 to 47.9)
pMMR	n = 191	n = 192	n = 192
Progression events or death, No. (%)	108 (56.5)	124 (64.6)	148 (77.1)
PFS, months, median (95% CI) ^a	15.0 (12.4 to 18.0)	9.9 (9.4 to 12.5)	9.7 (9.2 to 10.1)
HR (95% CI) v control arm ^c	0.57 (0.44 to 0.73)	0.77 (0.60 to 0.97)	
HR (95% CI) v durvalumab arm ^c	0.76 (0.59 to 0.99)		
6-month PFS rate, % (95% CI) ^a	83.1 (77.0 to 87.7)	82.4 (76.1 to 87.1)	84.4 (78.4 to 88.9)
12-month PFS rate, % (95% CI) ^a	59.4 (52.0 to 66.0)	44.4 (37.1 to 51.4)	40.8 (33.6 to 47.8)
18-month PFS rate, % (95% CI) ^a	42.0 (34.1 to 49.6)	31.3 (24.2 to 38.6)	20.0 (14.1 to 26.7)
PD-L1–positive ^d	n = 150	n = 170	n = 163
Progression events or death, No. (%)	68 (45.3)	97 (57.1)	114 (69.9)
PFS, months, median (95% CI) ^a	20.8 (15.1 to NR)	11.3 (9.7 to 15.4)	9.5 (7.9 to 9.9)
HR (95% CI) v control arm ^c	0.42 (0.31 to 0.57)	0.63 (0.48 to 0.83)	
HR (95% CI) v durvalumab arm ^c	0.67 (0.49 to 0.91)		
6-month PFS rate, % (95% CI) ^a	85.2 (78.3 to 90.0)	89.0 (83.1 to 92.9)	81.7 (74.6 to 87.0)
12-month PFS rate, % (95% CI) ^a	67.3 (59.0 to 74.2)	48.8 (40.8 to 56.3)	38.6 (30.7 to 46.4)
18-month PFS rate, % (95% CI) ^a	54.8 (45.7 to 63.0)	40.2 (32.1 to 48.2)	21.5 (14.7 to 29.3)
PD-L1–negative ^d	n = 82	n = 61	n = 75
Progression events or death, No. (%)	55 (67.1)	38 (62.3)	57 (76.0)
PFS, months, median (95% CI) ^a	10.1 (9.5 to 15.0)	9.7 (7.0 to 14.7)	9.9 (7.6 to 12.5)
HR (95% CI) v control arm ^c	0.80 (0.55 to 1.16)	0.89 (0.59 to 1.34)	
HR (95% CI) v durvalumab arm ^c	0.93 (0.61 to 1.41)		
6-month PFS rate, % (95% CI) ^a	81.5 (71.2 to 88.4)	71.0 (57.5 to 80.8)	84.7 (74.0 to 91.2)
12-month PFS rate, % (95% CI) ^a	49.9 (38.5 to 60.3)	44.9 (31.8 to 57.1)	46.6 (34.7 to 57.6)
18-month PFS rate, % (95% CI) ^a	30.4 (19.8 to 41.6)	31.1 (18.9 to 44.1)	22.7 (13.2 to 33.7)

NOTE. MMR status is per the randomization code.

Abbreviations: dMMR, mismatch repair deficient; HR, hazard ratio; ITT, intention-to-treat; MMR, mismatch repair; NR, not reached; PFS, progression-free survival; pMMR, mismatch repair proficient; TAP, tumor area positivity.

^aCalculated using the Kaplan-Meier technique. CI for median PFS was derived based on Brookmeyer-Crowley method.

^bThe HR and CI were estimated from a Cox proportional hazards model stratified by MMR and disease status. An HR <1 favored the treatment arm of interest over the comparator arm.

^cThe HR and CI were estimated from an unstratified Cox proportional hazards model. An HR <1 favored the treatment arm of interest over the comparator arm.

^dPD-L1–positive was defined as TAP ≥1%. PD-L1–negative was defined as TAP <1%.

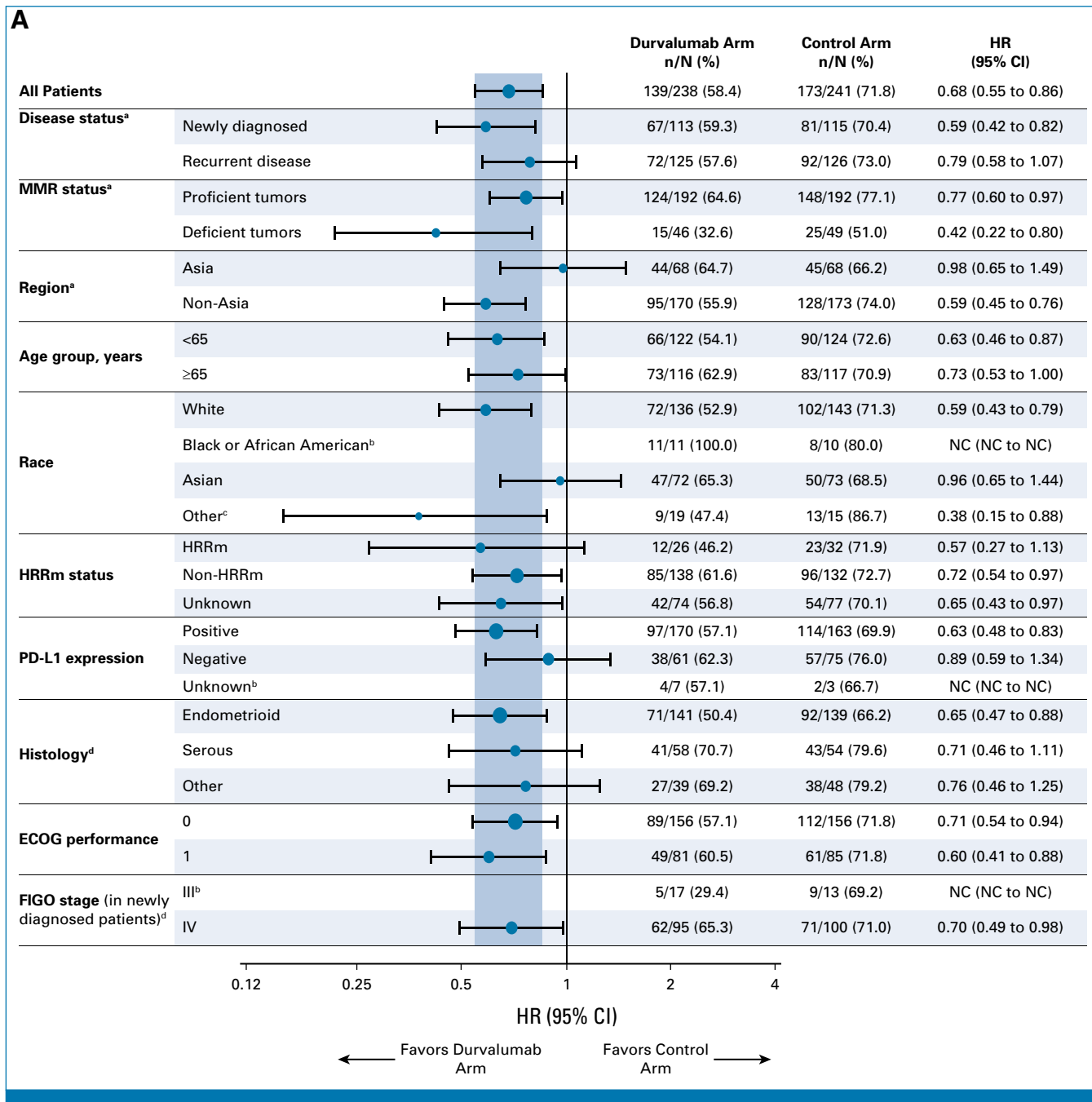


FIG 3. Subgroup analysis of PFS in (A) the durvalumab arm and (B) the durvalumab + olaparib arm. The HR and CI were estimated from an unstratified Cox proportional hazards model. An HR <1 favored the treatment arm of interest over the control arm. ^aStratification factors are per the randomization code. ^bHRs are not calculated because of the small number of patients. ^cIncludes patients with race not reported. ^dAs determined at the time of initial diagnosis of disease under investigation. ECOG, Eastern Cooperative Oncology Group; FIGO, International Federation of Gynecology and Obstetrics; HR, hazard ratio; HRRm, homologous recombination repair mutation; MMR, mismatch repair; NC, not calculated. (continued on following page)

arm versus control and 0.42 (95% CI, 0.31 to 0.57), with median PFS 20.8 versus 9.5 months for the durvalumab + olaparib arm versus control (Fig 4C). In the PD-L1-negative subgroup (TAP <1%), the HRs for PFS were 0.89 (95% CI, 0.59 to 1.34), median PFS 9.7 versus 9.9 for durvalumab versus control, and 0.80 (95% CI, 0.55 to 1.16), median PFS 10.1 versus 9.9 for durvalumab + olaparib versus control (Fig 4D).

Safety

Duration of study treatment is detailed in the Data Supplement (Table S2). Across treatment arms, the most commonly reported AEs of any grade included anemia, nausea, fatigue or asthenia, and alopecia throughout the study period, and nausea, anemia, and fatigue or asthenia

Downloaded from ascopubs.org by 158.129.162.194 on September 13, 2024 from 158.129.162.194
Copyright © 2024 American Society of Clinical Oncology. All rights reserved.

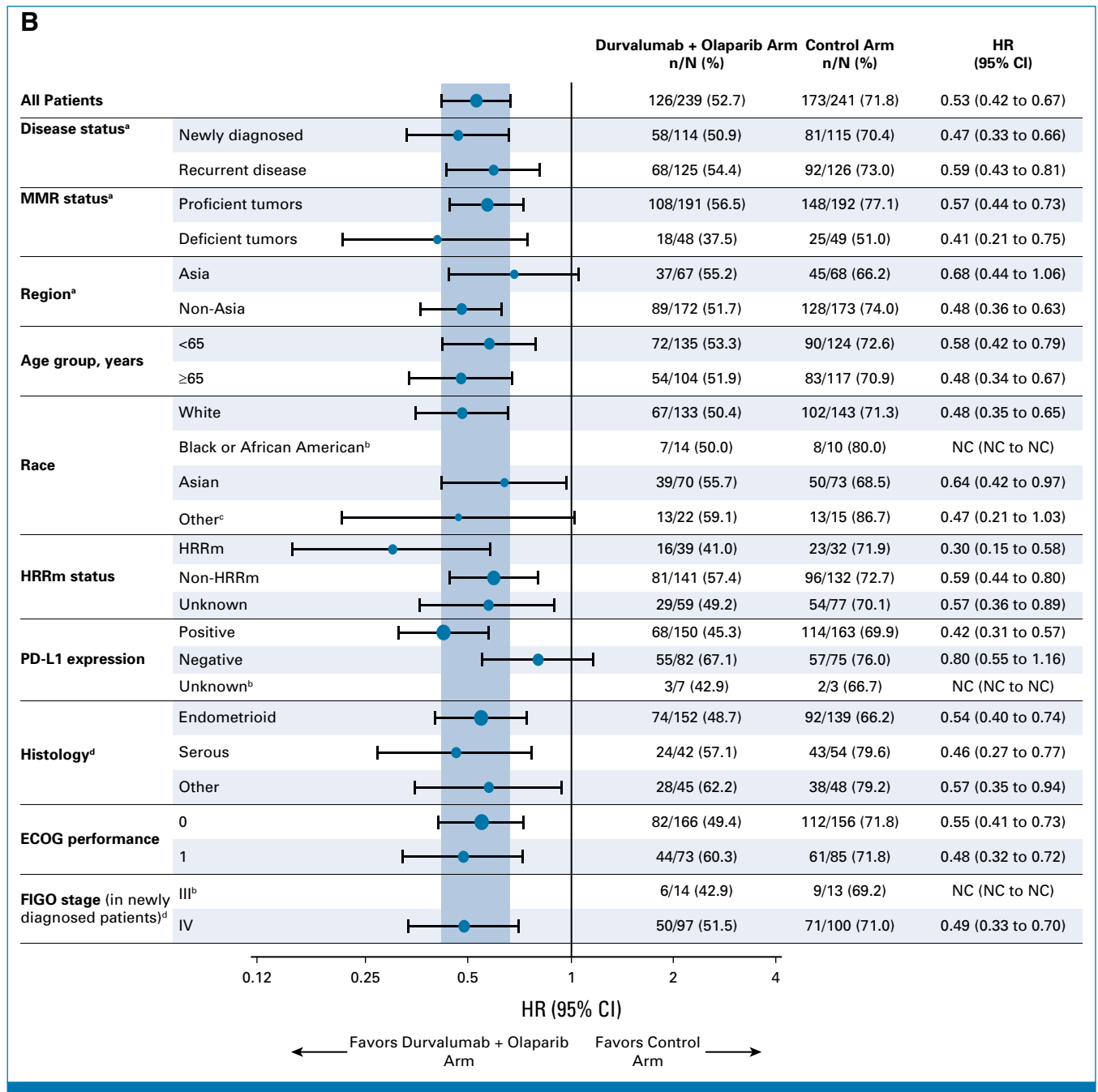


FIG 3. (Continued).

during the maintenance phase alone (Table 3). Most AEs occurring during the maintenance phase were low grade.

In the control, durvalumab, and durvalumab + olaparib arms, the overall incidence of grade 3 or higher treatment-emergent AEs was 56.4%, 54.9%, and 67.2%, respectively, and the incidence in the maintenance phase was 16.6%, 16.4%, and 41.1%, respectively. The overall incidence of grade 3 or higher neutropenia was 23.3%, 21.7%, and 26.9%, respectively, and the overall incidence of grade 3 or higher anemia was 14.4%, 15.7%, and 23.5%, respectively. Serious

AEs occurred overall in 30.9%, 31.1%, and 35.7%, of patients in the control, durvalumab, and durvalumab + olaparib arms, respectively (Data Supplement, Table S3), and fatal events occurred in 3.4%, 1.7%, and 2.1%, respectively (Data Supplement, Table S4).

There were no cases of MDS or AML. New primary malignancies occurred in three (1.3%), one (<1%), and two (<1%) patients and pneumonitis of any grade in one (<1%), four (1.7%), and 12 (5.0%) patients in the control, durvalumab, and durvalumab + olaparib arms, respectively; most pneumonitis

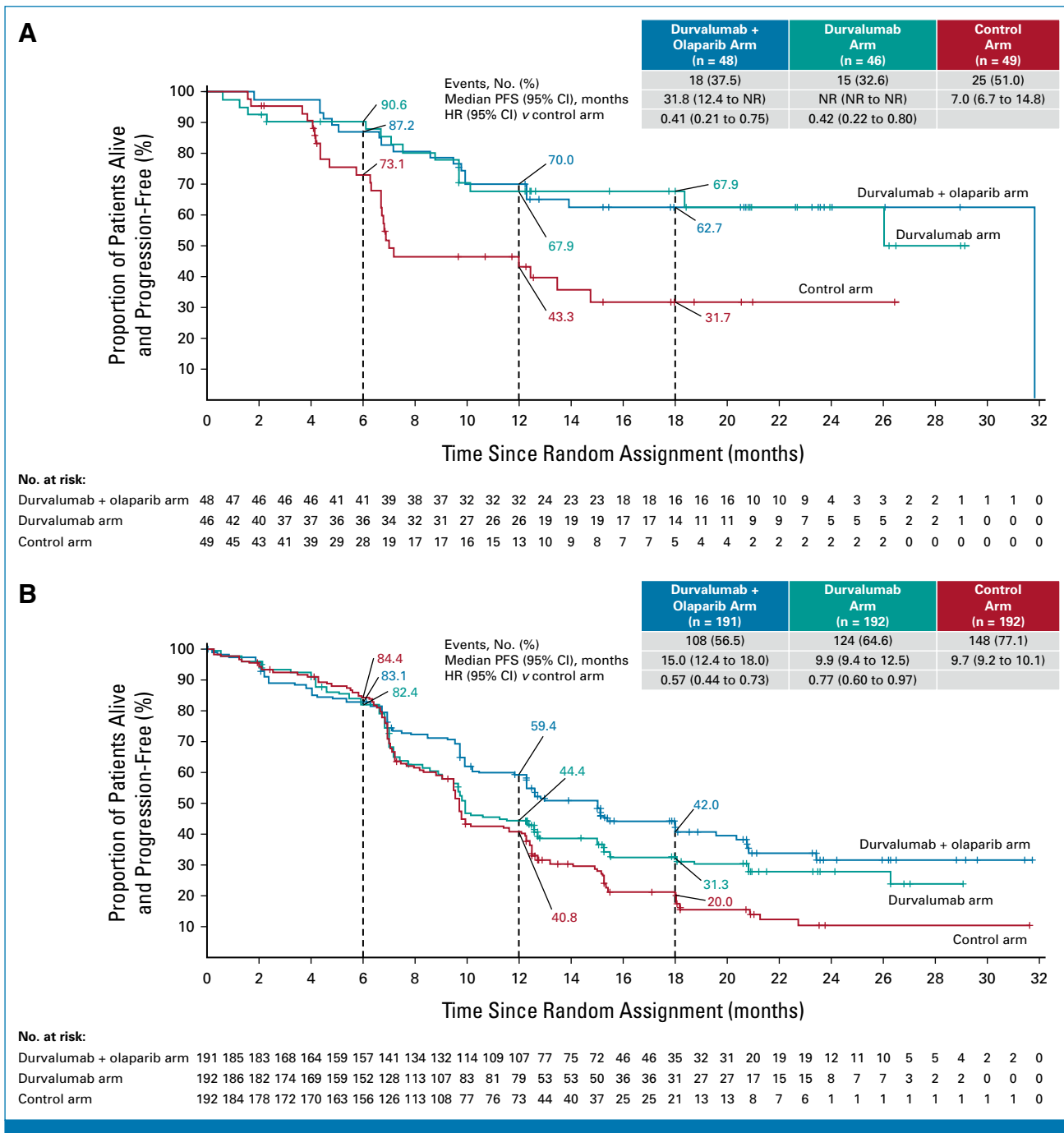


FIG 4. Exploratory PFS analyses, as assessed by the investigator according to RECIST v1.1, in (A) dMMR, (B) pMMR, (C) PD-L1–positive, and (D) PD-L1–negative subgroups. For dMMR and pMMR subgroup analyses, MMR status is as per the randomization code. The HR and 95% CI were estimated from an unstratified Cox proportional hazards model. Tick marks indicate a censored observation. Patients without an event were censored at the latest evaluable RECIST assessment. PD-L1 expression was assessed using the Ventana SP263 immunohistochemical assay (Roche Diagnostics). PD-L1–positive was defined as TAP $\geq 1\%$. PD-L1–negative was defined as TAP $< 1\%$. Unknown included patients who withdrew consent or due to sample unavailability. dMMR, mismatch repair-deficient; HR, hazard ratio; MMR, mismatch repair; NR, not reached; PFS, progression-free survival; pMMR, mismatch repair-proficient; TAP, tumor area positivity. (continued on following page)

events occurred during the maintenance phase. There were three (1.6%) cases of pure red cell aplasia reported in the durvalumab + olaparib arm during the maintenance phase or in the follow-up period, all CTCAE grade 3, with one leading to discontinuation of study treatment; no cases were reported in the durvalumab or control arms. There were three cases of

autoimmune hemolytic anemia (one [$< 1\%$] in the durvalumab arm and two [$< 1\%$] in the durvalumab + olaparib arm); all were grade 3.

Throughout the study period, immune-mediated AEs occurred in 6.8%, 28.1%, and 23.5% of patients in the control,

Downloaded from ascopubs.org by 158.129.162.194 on September 13, 2024 from 158.129.162.194 Copyright © 2024 American Society of Clinical Oncology. All rights reserved.

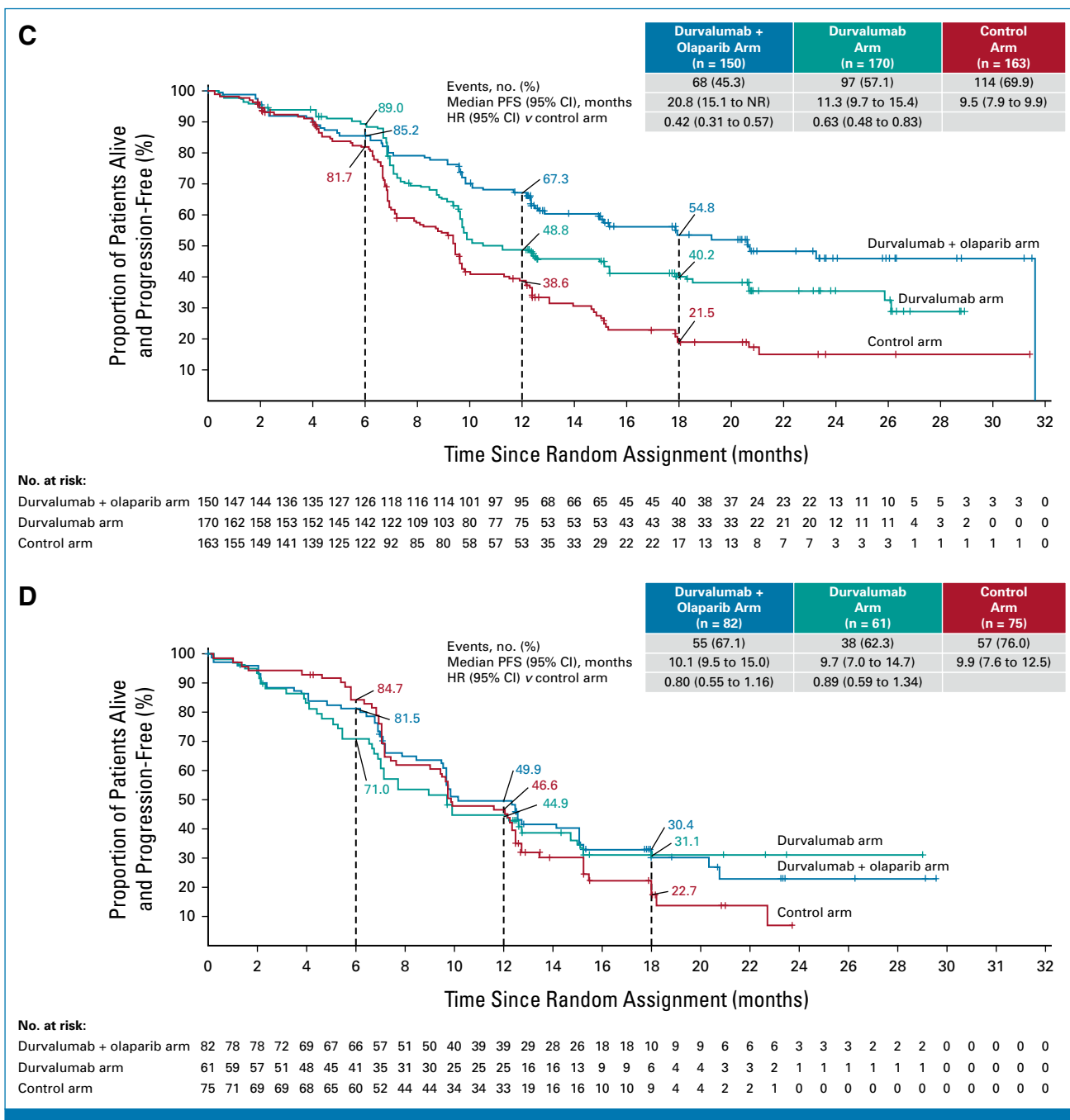


FIG 4. (Continued).

durvalumab, and durvalumab + olaparib arms, respectively (Table 3; Data Supplement [Table S5]).

AEs were usually managed by dose modification rather than discontinuation (Table 3). AEs leading to discontinuation of any study treatment during the chemotherapy and maintenance phases occurred in 44 (18.6%), 49 (20.9%), and 58 (24.4%) patients overall in the control, durvalumab, and durvalumab + olaparib arms, respectively. The most common AEs leading to discontinuation of each agent are shown in the Data Supplement (Table S6).

Patient-Reported Outcomes

Analyses of patient-reported outcomes are ongoing.

DISCUSSION

The phase III DUO-E trial demonstrated that durvalumab in combination with first-line carboplatin and paclitaxel followed by maintenance durvalumab with or without olaparib resulted in significantly lower risk of disease progression or death than chemotherapy alone (with an average 45% risk

TABLE 3. Summary of AEs

AE, No. (%)	Overall (chemotherapy phase + maintenance phase)			Maintenance Phase		
	Durvalumab + Olaparib Arm (n = 238)	Durvalumab Arm (n = 235)	Control Arm (n = 236)	Durvalumab + Olaparib Arm (n = 192)	Durvalumab Arm (n = 183)	Control Arm (n = 169)
Any-grade AE ^a	237 (99.6)	232 (98.7)	236 (100)	184 (95.8)	158 (86.3)	143 (84.6)
Anemia ^b	147 (61.8)	112 (47.7)	128 (54.2)	70 (36.5)	16 (8.7)	17 (10.1)
Nausea	130 (54.6)	96 (40.9)	105 (44.5)	79 (41.1)	22 (12.0)	25 (14.8)
Fatigue or asthenia	129 (54.2)	101 (43.0)	105 (44.5)	62 (32.3)	19 (10.4)	21 (12.4)
Alopecia	121 (50.8)	118 (50.2)	118 (50.0)	5 (2.6)	2 (1.1)	1 (0.6)
Neutropenia ^c	99 (41.6)	84 (35.7)	98 (41.5)	34 (17.7)	13 (7.1)	7 (4.1)
Constipation	78 (32.8)	64 (27.2)	81 (34.3)	13 (6.8)	13 (7.1)	9 (5.3)
Thrombocytopenia ^d	71 (29.8)	66 (28.1)	52 (22.0)	27 (14.1)	6 (3.3)	9 (5.3)
Diarrhea	67 (28.2)	74 (31.5)	66 (28.0)	34 (17.7)	28 (15.3)	20 (11.8)
Vomiting	61 (25.6)	49 (20.9)	43 (18.2)	39 (20.3)	13 (7.1)	16 (9.5)
Neuropathy peripheral	60 (25.2)	61 (26.0)	66 (28.0)	12 (6.3)	5 (2.7)	5 (3.0)
Peripheral sensory neuropathy	60 (25.2)	60 (25.5)	66 (28.0)	3 (1.6)	6 (3.3)	2 (1.2)
Arthralgia	58 (24.4)	71 (30.2)	58 (24.6)	22 (11.5)	34 (18.6)	16 (9.5)
Decreased appetite	55 (23.1)	42 (17.9)	46 (19.5)	28 (14.6)	9 (4.9)	6 (3.6)
Leukopenia ^e	48 (20.2)	40 (17.0)	45 (19.1)	19 (9.9)	7 (3.8)	9 (5.3)
Urinary tract infection	48 (20.2)	33 (14.0)	50 (21.2)	25 (13.0)	14 (7.7)	23 (13.6)
Any grade ≥3 AE ^f	160 (67.2)	129 (54.9)	133 (56.4)	79 (41.1)	30 (16.4)	28 (16.6)
Neutropenia ^c	64 (26.9)	51 (21.7)	55 (23.3)	12 (6.3)	1 (0.5)	1 (0.6)
Anemia ^b	56 (23.5)	37 (15.7)	34 (14.4)	36 (18.8)	0	1 (0.6)
Leukopenia ^e	15 (6.3)	11 (4.7)	13 (5.5)	2 (1.0)	1 (0.5)	0
Thrombocytopenia ^d	14 (5.9)	16 (6.8)	11 (4.7)	1 (0.5)	1 (0.5)	0
Fatigue or asthenia	12 (5.0)	8 (3.4)	7 (3.0)	4 (2.1)	1 (0.5)	0
AEs of special interest to olaparib	14 (5.9)	5 (2.1)	4 (1.7)	9 (4.7)	4 (2.2)	2 (1.2)
MDS/AML ^g	0	0	0	0	0	0
New primary malignancies ^h	2 (0.8)	1 (0.4)	3 (1.3)	1 (0.5)	1 (0.5)	2 (1.2)
Pneumonitis ⁱ	12 (5.0)	4 (1.7)	1 (0.4)	8 (4.2)	3 (1.6)	0
Immune-mediated AEs ^j	56 (23.5)	66 (28.1)	16 (6.8)	27 (14.1)	27 (14.8)	6 (3.6)
AEs leading to discontinuation of any study treatment	58 (24.4)	49 (20.9)	44 (18.6)	27 (14.1)	11 (6.0)	7 (4.1)
Durvalumab/placebo	22 (9.2)	26 (11.1)	19 (8.1)	16 (8.3)	9 (4.9)	4 (2.4)
Olaparib/placebo	21 (8.8)	11 (4.7)	5 (2.1)	21 (10.9)	10 (5.5)	5 (3.0)
Chemotherapy	31 (13.0)	31 (13.2)	32 (13.6)	1 (0.5)	2 (1.1)	1 (0.6)

(continued on following page)

TABLE 3. Summary of AEs (continued)

AE, No. (%)	Overall (chemotherapy phase + maintenance phase)			Maintenance Phase		
	Durvalumab + Olaparib Arm (n = 238)	Durvalumab Arm (n = 235)	Control Arm (n = 236)	Durvalumab + Olaparib Arm (n = 192)	Durvalumab Arm (n = 183)	Control Arm (n = 169)
AEs leading to dose interruption/delay of any study treatment ^k	164 (68.9)	128 (54.5)	118 (50.0)	113 (58.9)	52 (28.4)	37 (21.9)
AEs leading to dose reduction of olaparib/placebo	65 (27.3)	14 (6.0)	5 (2.1)	63 (32.8)	13 (7.1)	4 (2.4)

NOTE. Includes AEs with onset or worsening on or after the date of first dose of durvalumab/placebo or olaparib/placebo (overall) or first dose of olaparib/placebo (maintenance phase) until initiation of the first subsequent anticancer therapy after last dose of study treatment or until the end of the safety follow-up period, whichever occurred first. AEs were graded using National Cancer Institute Common Terminology Criteria for Adverse Events (v5.0).

Abbreviations: AE, adverse event; MDS, myelodysplastic syndrome.

^aAEs of any grade with overall incidence of $\geq 20\%$ in any arm. In addition, COVID-19 was reported in 48 (20.2%) patients in the durvalumab + olaparib arm, 36 (15.3%) patients in the durvalumab arm, and 32 (13.6%) patients in the control arm overall, and in 34 (17.7%), 21 (11.5%), and 20 (11.8%) patients, respectively, during the maintenance phase.

^bIncludes patients with anemia or a decreased hemoglobin level.

^cIncludes patients with neutropenia, febrile neutropenia, neutropenic infection, neutropenic sepsis, a decreased neutrophil count, or agranulocytosis.

^dIncludes patients with thrombocytopenia or a decreased platelet count.

^eIncludes patients with leukopenia or a decreased WBC count.

^fGrade ≥ 3 AEs with overall incidence of $\geq 5\%$ in any arm.

^gMDS/AML and new primary malignancies include AEs from first dose of investigational product (durvalumab/placebo or olaparib/placebo) until the end of the study (includes cases reported beyond the safety follow-up period).

^hExcludes one event of basal cell carcinoma.

ⁱGrouped term; includes pneumonitis, bronchiolitis, and interstitial lung disease.

^jAs assessed by the investigator and programmatically derived from individual causality assessments for combination studies. Missing responses are counted as related.

^kFor durvalumab/placebo, this includes dose interruption during infusion as well as doses that were skipped or delayed.

reduction in the durvalumab + olaparib arm and 29% in the durvalumab arm compared with control) for patients with newly diagnosed advanced or recurrent endometrial cancer. These data confirm the clinical benefit of integrating immunotherapy into first-line chemotherapy, and to our knowledge, are the first to indicate that the addition of a PARP inhibitor may offer further benefit in this setting.

In prespecified exploratory subgroup analyses of PFS, all observed HR point estimates favored the durvalumab and durvalumab + olaparib arms versus control. Analyses by MMR status showed that in the dMMR subgroup, similar clinically meaningful benefit was observed in the durvalumab arm versus control (HR, 0.42 [95% CI, 0.22 to 0.80]) and in the durvalumab + olaparib arm versus control (HR, 0.41 [95% CI, 0.21 to 0.75]). In the pMMR subgroup, clinically meaningful benefit was observed in the durvalumab arm versus control (HR, 0.77 [95% CI, 0.60 to 0.97]) and the addition of maintenance olaparib to durvalumab suggested further benefit (HR *v* control, 0.57 [95% CI, 0.44 to 0.73]). Prespecified, exploratory analysis of the durvalumab + olaparib versus durvalumab arms suggested the contribution of olaparib was in the pMMR subgroup (HR in pMMR subgroup, 0.76 [95% CI, 0.59 to 0.99]; HR in dMMR subgroup, 0.97 [95% CI, 0.49 to 1.98]). Exploratory analyses by PD-L1 status suggested a benefit was observed for the PD-L1-positive subgroup, with a clinically meaningful improvement in PFS (HR, 0.63 [95% CI, 0.48 to 0.83] for the durvalumab arm *v* control and HR 0.42 [95% CI, 0.31 to 0.57] for the durvalumab + olaparib arm *v* control), whereas a smaller magnitude of improvement was observed for the PD-L1-negative subgroup (HR, 0.89 [95% CI, 0.59 to 1.34] and 0.80 [95% CI, 0.55 to 1.16] for durvalumab and durvalumab + olaparib arms *v* control, respectively). Additional biomarker analyses are ongoing.

A clinical benefit has also recently been reported for combination therapy with an immune checkpoint inhibitor and standard chemotherapy in endometrial cancer in the RUBY and NRG-GY018 trials. Caution is needed when comparing outcomes between DUO-E, RUBY, and NRG-GY018 because of differences in patient populations, including in the number of patients with newly diagnosed stage III disease, inclusion of patients with carcinosarcoma in DUO-E and RUBY but not NRG-GY018, and differences in the duration of follow-up and data maturity between trials. Both trials reported a PFS benefit in endometrial cancer (RUBY with dostarlimab and platinum-based chemotherapy versus platinum-based chemotherapy alone; NRG-GY018 with pembrolizumab and platinum-based chemotherapy versus platinum-based chemotherapy alone), with a particular benefit in dMMR subgroups of patients.^{7,8} Similarly, in DUO-E, a PFS benefit was observed for the durvalumab arm versus

control irrespective of MMR status, although the greatest benefit was seen in the dMMR subgroups.

In support of the primary end points, the first interim analysis of OS favored both the durvalumab and durvalumab + olaparib arms compared with control, with generally consistent improvements in PFS and OS observed in the intention-to-treat population. Patients continue to be monitored for safety and efficacy, and updated OS analyses will be reported with longer follow-up.

The safety profiles of the experimental arms were generally consistent with the known profiles of the individual components of the regimens. The delivery of chemotherapy was not compromised by other treatments, and although the frequency of AEs leading to discontinuation of any treatment was numerically highest with durvalumab + olaparib, it remained similar across arms. AEs of special or potential interest related to durvalumab were consistent with the known safety profile of durvalumab. For AEs related to olaparib, there were no cases of MDS or AML, and the incidence of new primary malignancies was low. Events of pneumonitis were consistent with the known safety profile of olaparib and durvalumab. In line with the known safety profile of maintenance olaparib, events of anemia contributed to a higher rate of grade 3 or higher AEs in the durvalumab + olaparib arm.

The DUO-E trial enrolled patients globally, including approximately 28% of patients randomly assigned in the Asia region (compared with 3% of Asian race/ethnicity in RUBY and 5% of Asian race/ethnicity in NRG-GY018). In DUO-E, the small proportion of patients with stage III disease enrolled was likely because of the requirement for measurable disease.

In conclusion, to our knowledge, DUO-E is the first phase III trial to examine the combination of immunotherapy and PARP inhibition in endometrial cancer. The addition of durvalumab to standard first-line platinum-based chemotherapy followed by maintenance durvalumab with or without olaparib significantly improved PFS outcomes for patients with first-line advanced or recurrent endometrial cancer, confirming the clinical benefit of integrating immunotherapy into first-line chemotherapy and demonstrating a potential role for PARP inhibition in this setting. Predefined, exploratory subgroup analyses suggest the addition of maintenance olaparib to the combination of durvalumab plus chemotherapy may improve outcomes in the pMMR and PD-L1-positive patient populations. Although there was a higher rate of grade 3 or higher AEs in the durvalumab + olaparib arm, the safety profiles of each arm were generally consistent with the known profiles of individual components of the regimen.

AFFILIATIONS

¹University of Texas MD Anderson Cancer Center, Houston, TX

²Stephenson Cancer Center at the University of Oklahoma Medical Center, Oklahoma, OK

³H. Lee Moffitt Cancer Center, Tampa, FL

⁴Department of Obstetrics and Gynecology, Yonsei University College of Medicine, Seoul, Republic of Korea

⁵Minnesota Oncology, Minneapolis, MN

⁶FirstHealth Moore Regional Hospital, Pinehurst, NC

⁷RAMBAM Health Care Campus, Haifa, and Israeli Society of Gynecologic Oncology (ISGO), Israel

⁸Texas Oncology-San Antonio Medical Center, San Antonio, TX

⁹Department of Obstetrics and Gynecology, Kurume University School of Medicine, Kurume, Fukuoka, Japan

¹⁰Oklahoma Cancer Specialists and Research Institute, Tulsa, OK

¹¹Tianjin Medical University Cancer Institute & Hospital, Tianjin, China

¹²Texas Health Presbyterian Hospital, Dallas, TX

¹³West Cancer Center Research Institute & University of Tennessee Health Science Center, Memphis, TN

¹⁴Tisch Cancer Institute, Icahn School of Medicine at Mount Sinai, New York, NY, and GOG Foundation (GOG-F), USA

¹⁵Sun Yat-sen University Cancer Center, Guangzhou, China

¹⁶Virginia Oncology Associates, Brock Cancer Center, Norfolk, VA, and GOG Foundation (GOG-F), USA

¹⁷National Cancer Institute of Colombia, Bogotá, Colombia

¹⁸Department of Medical Oncology, National Cancer Center Hospital, Tokyo, Japan

¹⁹Fred Hutchinson Cancer Center, University of Washington Medical Center, Seattle, WA

²⁰National Institute of Oncology, Budapest, and Central and Eastern European Gynecologic Oncology Group (CEEGOG), Hungary

²¹Clinical Research and Technological Development Division, Brazilian National Cancer Institute, Rio de Janeiro, Brazil

²²Charité—Department of Gynecology with Center of Oncological Surgery, Universitätsmedizin Berlin, Berlin, and North Eastern German Society of Gynecological Oncology (NOGGO), Germany

²³Department of Obstetrics and Gynecology, Gynecological Oncology and Gynecological Endocrinology, Medical University of Gdańsk, Gdańsk, and Polish Gynecologic Oncology Group (PGOG), Poland

²⁴Aretaieion University Hospital, National and Kapodistrian University of Athens, Athens, and Hellenic Cooperative Oncology Group (HeCOG), Greece

²⁵Medical Oncology Department, Catalan Institute of Oncology-Institut d'Investigació Biomèdica de Bellvitge (IDIBELL), Hospital Duran i Reynals, L'Hospitalet-Barcelona, Barcelona, and Grupo Español de Investigación en Cáncer de Ovario (GEICO), Spain

²⁶Department of Medical Oncology, National Cancer Institute of Lithuania, Faculty of Medicine of Vilnius University, Vilnius, and Nordic Society of Gynaecological Oncology (NSGO), Lithuania

²⁷Oncology Biometrics, AstraZeneca, Cambridge, United Kingdom

²⁸Oncology R&D, Global Medicines Development, AstraZeneca, Cambridge, United Kingdom

²⁹Oncology R&D, Late-stage Development, AstraZeneca, Gaithersburg, MD

³⁰University Hospital Leuven, Leuven, and Luxembourg Gynaecological Oncology Group (BGOG), Belgium

CORRESPONDING AUTHOR

Shannon N. Westin, MD, MPH, University of Texas MD Anderson Cancer Center, 1155 Pressler St, Unit 1362, Houston, TX 77005; e-mail: swestin@mdanderson.org.

EQUAL CONTRIBUTION

S.N.W. and K.M. contributed equally to this work.

SUPPORT

Supported by AstraZeneca. Medical writing assistance was provided by Rachel Dodd, PhD from Cence, funded by AstraZeneca.

CLINICAL TRIAL INFORMATION

NCT04269200 (DUO-E)

AUTHORS' DISCLOSURES OF POTENTIAL CONFLICTS OF INTEREST

Disclosures provided by the authors are available with this article at DOI <https://doi.org/10.1200/JCO.23.02132>.

DATA SHARING STATEMENT

Data underlying the findings described in this manuscript may be obtained in accordance with AstraZeneca's data sharing policy described at [https://astrazenecagrouptrials.pharmacm.com/ST/ Submission/Disclosure](https://astrazenecagrouptrials.pharmacm.com/ST/Submission/Disclosure).

Data for studies directly listed on Vivli can be requested through Vivli at <https://vivli.org/>. Data for studies not listed on Vivli could be requested through Vivli at <https://vivli.org/members/enquiries-about-studies-not-listed-on-the-vivli-platform/>. AstraZeneca Vivli member page is also available outlining further details: <https://vivli.org/ourmember/astrazeneca/>.

AUTHOR CONTRIBUTIONS

Conception and design: Shannon N. Westin, Kathleen Moore, Jung-Yun Lee, Todd D. Tillmanns, Michael McCollum, Fernando Contreras Mejia, Tadaaki Nishikawa, Conor Donnelly, Xiaochun Liu

Administrative support: Kristi McIntyre, Todd D. Tillmanns, Michael McCollum

Provision of study materials or patients: All authors

Collection and assembly of data: All authors

Data analysis and interpretation: All authors

Manuscript writing: All authors

Final approval of manuscript: All authors

Accountable for all aspects of the work: All authors

ACKNOWLEDGMENT

The authors thank all the volunteers who participated in this study, their families, and the investigators.

Appendix [Table A1](#) (online only) lists the principal investigator for each site that participated in the study.

REFERENCES

1. Siegel RL, Miller KD, Fuchs HE, et al: Cancer statistics, 2022. *CA Cancer J Clin* 72:7-33, 2022
2. Oaknin A, Bosse TJ, Creutzberg CL, et al: Endometrial cancer: ESMO clinical Practice guideline for diagnosis, treatment and follow-up. *Ann Oncol* 33:860-877, 2022
3. Miller DS, Filiaci VL, Mannel RS, et al: Carboplatin and paclitaxel for advanced endometrial cancer: Final overall survival and adverse event analysis of a phase III trial (NRG Oncology/GOG0209). *J Clin Oncol* 38:3841-3850, 2020
4. Aghajanian C, Filiaci V, Dizon DS, et al: A phase II study of frontline paclitaxel/carboplatin/bevacizumab, paclitaxel/carboplatin/temsirolimus, or ixabepilone/carboplatin/bevacizumab in advanced/recurrent endometrial cancer. *Gynecol Oncol* 150:274-281, 2018

5. Miller D, Filiaci V, Fleming G, et al: Late-Breaking Abstract 1: Randomized phase III noninferiority trial of first line chemotherapy for metastatic or recurrent endometrial carcinoma: A Gynecologic Oncology Group study. *Gynecol Oncol* 125:771, 2012
6. Pectasides D, Xiros N, Papaxoinis G, et al: Carboplatin and paclitaxel in advanced or metastatic endometrial cancer. *Gynecol Oncol* 109:250-254, 2008
7. Mirza MR, Chase DM, Slomovitz BM, et al: Dostarlimab for primary advanced or recurrent endometrial cancer. *N Engl J Med* 388:2145-2158, 2023
8. Eskander RN, Sill MW, Beffa L, et al: Pembrolizumab plus chemotherapy in advanced endometrial cancer. *N Engl J Med* 388:2159-2170, 2023
9. André T, Berton-Rigaud D, Curigliano G, et al: 549P Progression-free survival (PFS) and overall survival (OS) in patients (pts) with mismatch repair deficient (dMMR) solid tumors treated with dostarlimab in the GARNET study. *Ann Oncol* 33:S799-S800, 2022
10. Antill Y, Kok PS, Robledo K, et al: Clinical activity of durvalumab for patients with advanced mismatch repair-deficient and repair-proficient endometrial cancer. A nonrandomized phase 2 clinical trial. *J Immunother Cancer* 9:e002255, 2021
11. Makker V, Colombo N, Casado Herraiz A, et al: Lenvatinib plus pembrolizumab for advanced endometrial cancer. *N Engl J Med* 386:437-448, 2022
12. Marabelle A, Le DT, Ascierto PA, et al: Efficacy of pembrolizumab in patients with noncolorectal high microsatellite instability/mismatch repair-deficient cancer: Results from the phase II KEYNOTE-158 study. *J Clin Oncol* 38:1-10, 2020
13. FDA: Jemperli prescribing information, 2023. https://www.accessdata.fda.gov/drugsatfda_docs/label/2023/761174s006lbl.pdf
14. Pina A, Wolber R, McAlpine JN, et al: Endometrial cancer presentation and outcomes based on mismatch repair protein expression from a population-based study. *Int J Gynecol Cancer* 28:1624-1630, 2018
15. Lee EK, Konstantinopoulos PA: Combined PARP and immune checkpoint inhibition in ovarian cancer. *Trends Cancer* 5:524-528, 2019
16. Li A, Yi M, Qin S, et al: Prospects for combining immune checkpoint blockade with PARP inhibition. *J Hematol Oncol* 12:98, 2019
17. Stewart RA, Pilié PG, Yap TA: Development of PARP and immune-checkpoint inhibitor combinations. *Cancer Res* 78:6717-6725, 2018
18. Wanderley CWS, Correa TS, Scaranti M, et al: Targeting PARP1 to enhance anticancer checkpoint immunotherapy response: Rationale and clinical implications. *Front Immunol* 13:816642, 2022
19. AstraZeneca: Global Policy: Bioethics, 2019. <https://www.astrazeneca.com/content/dam/az/PDF/2019/Bioethics%20Policy%20final.pdf>



We are a global community of nearly 45,000 members from more than 150 countries, serving members from all subspecialties and professional roles in the pursuit of quality cancer care and progress. Membership provides the support, resources, and solutions for your professional needs:

- Stay on the cutting edge of scientific research and advances
- Streamline your pursuit of continuous learning
- Access evidence-based and data-driven quality resources
- Obtain insight into best practices for cancer care teams
- Connect and exchange views with oncology experts

To learn more about the value of membership, visit asco.org/membership. Not a member? Join today at join.asco.org.

AUTHORS' DISCLOSURES OF POTENTIAL CONFLICTS OF INTEREST

Durvalumab Plus Carboplatin/Paclitaxel Followed by Maintenance Durvalumab With or Without Olaparib as First-Line Treatment for Advanced Endometrial Cancer: The Phase III DUO-E Trial

The following represents disclosure information provided by authors of this manuscript. All relationships are considered compensated unless otherwise noted. Relationships are self-held unless noted. I = Immediate Family Member, Inst = My Institution. Relationships may not relate to the subject matter of this manuscript. For more information about ASCO's conflict of interest policy, please refer to www.asco.org/rwc or ascopubs.org/jco/authors/author-center.

Open Payments is a public database containing information reported by companies about payments made to US-licensed physicians ([Open Payments](#)).

Shannon N. Westin

This author is a Consultant Editor for *Journal of Clinical Oncology*. Journal policy recused the author from having any role in the peer review of this manuscript.

Consulting or Advisory Role: Roche, AstraZeneca, Genentech, Medscape, Clovis Oncology, Gerson Lehrman Group, Vaniam Group, Merck, BioAscent, OncLive, Targeted Oncology, Curio Science, GlaxoSmithKline, Eisai, Zentalis, EQRX, Lilly, Vincerx Pharma, Mereo BioPharma, Immunogen, Mersana, NGM Biopharmaceuticals, Caris Life Sciences, Nuvectis Pharma, Seagen, Immunocore, ZielBio, Verastem, Gilead Sciences, Mersana

Research Funding: AstraZeneca (Inst), Novartis (Inst), Bayer (Inst), Clovis Oncology (Inst), Roche/Genentech (Inst), GOG Foundation (Inst), Mereo BioPharma (Inst), Bio-Path Holdings, Inc (Inst), GlaxoSmithKline (Inst), Zentalis (Inst), Avenge Bio (Inst), Jazz Pharmaceuticals (Inst)

Kathleen Moore

Leadership: GOG Partners, NRG Oncology (Inst)
Honoraria: Research To Practice, Prime Oncology, Physicians' Education Resource, Great Debates and Updates
Consulting or Advisory Role: Genentech/Roche, Immunogen, AstraZeneca, VBL Therapeutics, Merck, Eisai, Mersana (Inst), Myriad Genetics, Alkermes (Inst), Blueprint Medicines (Inst), GlaxoSmithKline/Tesaro (Inst), OncXerna Therapeutics, Onconova Therapeutics, Mereo BioPharma, Novartis, Verastem/Pharmacocyclics, AADi, Clovis Oncology, Caris Life Sciences, Hengrui Pharmaceutical, Novartis/Pfizer, Iovance Biotherapeutics, aadi, Duality Biologics (Inst), Janssen Oncology, Regeneron, zentalis

Research Funding: PTC Therapeutics (Inst), Lilly (Inst), Merck (Inst), Tesaro (Inst), Genentech (Inst), Clovis Oncology (Inst), Lilly Foundation (Inst), Regeneron (Inst), Bristol Myers Squibb (Inst), Verastem (Inst), Novartis Pharmaceuticals UK Ltd (Inst), AstraZeneca (Inst), Agenus (Inst), Takeda (Inst), Immunogen (Inst), Novogen (Inst), artios (Inst), Bolt Biotherapeutics (Inst), Amgen (Inst), Daiichi Sankyo/Lilly (Inst), cyteir (Inst), Immunocore (Inst)

Patents, Royalties, Other Intellectual Property: UpToDate
Travel, Accommodations, Expenses: GlaxoSmithKline, AstraZeneca
Other Relationship: GOG Partners (Inst)

Hye Sook Chon

Honoraria: Curio Science, Envision Communications, MJH Healthcare Holdings, LLC, Guidepoint Global
Consulting or Advisory Role: Envision Communications, Eisai
Speakers' Bureau: Clinical Care Options
Travel, Accommodations, Expenses: Agenus

Jung-Yun Lee

Consulting or Advisory Role: AstraZeneca, MSD, Roche, Takeda
Research Funding: Clovis Oncology (Inst), Immunogen (Inst), Janssen Oncology (Inst), Merck (Inst), MSD (Inst), Synthon (Inst), MSD (Inst),

Eisai (Inst), Mersana (Inst), Ascendis Pharma (Inst), AstraZeneca (Inst), Novartis (Inst), OncoQuest Pharmaceuticals (Inst), Roche (Inst), Seagen (Inst), Takeda (Inst)

Jessica Thomes Pepin

Consulting or Advisory Role: Seagen

Michael Sundborg

Employment: GlaxoSmithKline
Honoraria: GlaxoSmithKline
Speakers' Bureau: GlaxoSmithKline

Ayelet Shai

Consulting or Advisory Role: Stemline Therapeutics, Gilead Sciences
Speakers' Bureau: Novartis Biocencias
Travel, Accommodations, Expenses: Pfizer

Joseph de la Garza

Consulting or Advisory Role: AstraZeneca
Speakers' Bureau: Merck, Seagen, AstraZeneca
Other Relationship: Intuitive Surgical

Michael A. Gold

Travel, Accommodations, Expenses: ASCCP

Todd D. Tillmanns

Employment: West Clinic
Leadership: Regional One Health, St Francis
Honoraria: AstraZeneca, Intuitive Surgical, GlaxoSmithKline, Eisai, Myriad Genetics
Speakers' Bureau: Eisai, GlaxoSmithKline, AstraZeneca

Stephanie V. Blank

Stock and Other Ownership Interests: Johnson & Johnson
Research Funding: Merck (Inst), Seagen (Inst), AstraZeneca (Inst), Aravive (Inst), F. Hoffmann LaRoche (Inst), GlaxoSmithKline (Inst)
Uncompensated Relationships: AstraZeneca

Michael McCollum

Employment: Virginia Oncology Associates
Research Funding: GlaxoSmithKline (Inst), Seagen (Inst), Pfizer (Inst), Genentech (Inst)

Fernando Contreras Mejia

Honoraria: Amgen, AstraZeneca/Columbia, Bristol Myers Squibb Colombia, Lilly, Janssen, MSD Oncology, Novartis Colombia
Consulting or Advisory Role: GlaxoSmithKline, Bristol Myers Squibb Colombia

Tadaaki Nishikawa

Honoraria: Eisai, Takeda, MSD, Sanofi

Consulting or Advisory Role: Eisai

Speakers' Bureau: AstraZeneca, Eisai, Chugai/Roche, Takeda, MSD, Taiho Pharmaceutical, Sanofi, Genmab

Research Funding: AstraZeneca/Daiichi Sankyo (Inst)

Zoltan Novak

Stock and Other Ownership Interests: Richter Gedeon

Honoraria: AstraZeneca, Sofmedica, Richter Gedeon

Speakers' Bureau: MSD Oncology, Richter Gedeon

Travel, Accommodations, Expenses: GlaxoSmithKline

Andreia Cristina De Melo

Honoraria: MSD Oncology, Novartis, BMS, GlaxoSmithKline, AstraZeneca, Sanofi, Roche

Consulting or Advisory Role: MSD, Novartis, GlaxoSmithKline, AstraZeneca

Research Funding: Roche (Inst), MSD Oncology (Inst), BMS Brazil (Inst), Novartis (Inst), Clovis Oncology (Inst), AstraZeneca (Inst)

Travel, Accommodations, Expenses: MSD Oncology

Jalid Sehouli

Honoraria: AstraZeneca, Eisai, Clovis Oncology, Olympus Medical Systems, Johnson & Johnson, PharmaMar, Pfizer, Teva, Tesaro, MSD Oncology, GlaxoSmithKline, Bayer

Consulting or Advisory Role: AstraZeneca, Clovis Oncology, PharmaMar, Merck, Pfizer, Tesaro, MSD Oncology, Lilly, Novocure, Johnson & Johnson, Roche, Ingress Health, Riemser, Sobi, GlaxoSmithKline, Novartis, Alkermes

Research Funding: AstraZeneca (Inst), Clovis Oncology (Inst), Merck (Inst), Bayer (Inst), PharmaMar (Inst), Pfizer (Inst), Tesaro (Inst), MSD Oncology (Inst), Roche (Inst)

Travel, Accommodations, Expenses: AstraZeneca, Clovis Oncology, PharmaMar, Roche Pharma AG, Tesaro, Tesaro, MSD Oncology, Olympus

Dagmara Klasa-Mazurkiewicz

Travel, Accommodations, Expenses: AstraZeneca

Christos Papadimitriou

Honoraria: Novartis, AstraZeneca, Genesis Therapeutics, MSD Oncology

Consulting or Advisory Role: Amgen Astellas BioPharma, Roche

Research Funding: Roche, WinMedica

Marta Gil-Martin

Consulting or Advisory Role: AstraZeneca

Travel, Accommodations, Expenses: MSD Oncology, GlaxoSmithKline

Birute Brasiuniene

Honoraria: Novartis, Merck Serono, Lilly, Sandoz, Swiss Pharma

Consulting or Advisory Role: AstraZeneca, MSD, Merck Serono, Swiss Pharma, Novartis, Lilly, SERVIER, Ipsen

Speakers' Bureau: AstraZeneca, MSD, Merck Serono, Swiss Pharma, Novartis, Lilly, SERVIER, Ipsen

Expert Testimony: Novartis, Merck Serono, Lilly, Sandoz, Swiss Pharma

Travel, Accommodations, Expenses: AstraZeneca, MSD, Swiss Pharma, Novartis, Ipsen, Janssen

Other Relationship: ESMO, European Organisation for Research and Treatment of Cancer (EORTC), Nordic Society of Gynecological Oncology (NSGO)

Conor Donnelly

Employment: AstraZeneca, Exploristics

Paula Michelle del Rosario

Employment: AstraZeneca

Stock and Other Ownership Interests: AstraZeneca

Travel, Accommodations, Expenses: AstraZeneca

Xiaochun Liu

Employment: AstraZeneca

Stock and Other Ownership Interests: AstraZeneca

Travel, Accommodations, Expenses: AstraZeneca

Els Van Nieuwenhuysen

Consulting or Advisory Role: Regeneron (Inst), Oncoinvent, AstraZeneca (Inst)

Research Funding: AstraZeneca (Inst), Lilly (Inst), Merck (Inst), Seagen (Inst), Roche (Inst), Novartis (Inst), Regeneron (Inst), Oncoinvent (Inst)

Travel, Accommodations, Expenses: Regeneron (Inst)

No other potential conflicts of interest were reported.

TABLE A1. DUO-E Investigators

Country	Principal Investigator
Australia	Sophia Frentzas, Kichendasse Ganessan, Bo Gao, Tarek Meniawy, Linda Mileshekin, Gary Richardson, Felicia Roncolato
Belgium	Jean-Francois Baurain, Maryam Bourhaba, Eveline De Cuyper, Philip Debruyne, Hannelore Denys, Frederic Forget, Brigitte Honhon, Eric Joosens, Els Van Nieuwenhuysen
Brazil	Vanessa da Costa Miranda, Andreia Cristina De Melo, Joao Daniel Guedes, Charles Andree Joseph de Padua, Nicolas Lazaretti, Carolina Martins Vieira, Andre Mattar, Daniela Neves Palmeiro, Christina Pimentel Oppermann Kussler, Pedro Emanuel Rubini Liedke, Joao Soares Nunes, Katsuki Arima Tiscoski
Canada	Allan Covens, Lara De Guerke, Prafull Ghatage, Lucy Gilbert, Susie Lau, Amit Oza, Diane Provencher, Omar Touhami
China	Li Congzhu, Wang Danbo, Lou Ge, Zhu Gen-Hai, Li Guiling, Shi Hong, Zheng Hong, Wen Hongwu, Liu Ji-Hong, Wang Jing, Wang Ke, Jiang Kui, Li Li, Wang Li, Hao Min, Zhou Qi, Gao Qinglei, Liao Sihai, Zhang Songling, Zhao Weidong, Xiaohua Wu, Wang Wuliang, Rutie Yin, Cheng Ying, Zhang Yu, Liang Zhiqing
Colombia	Fernando Contreras Mejia, Angel Luis Hernandez, Carolina Ortiz Lopez, Carlos Javier Pacheco, Pedro Luis Ramos Guette, Jaime Rendon Pereira, Julian Rivera Diaz, Tomas Sanchez Villegas, Juan Pablo Suso, Marco Antonio Torregroza Otero
Estonia	Karin Grisan, Elen Vettus
Germany	Bahriye Aktas, Eva Egger, Petra Krabisch, Andreas Muller, Joachim Rom, Jalid Sehouli, Antje Sperfeld, Pauline Wimberger, Andreas Zorr
Greece	George Fountzilas, Sofia Karageorgopoulou, Christos Papadimitriou, Amanda Psyrii, Florai Zagour
Hong Kong	Karen Kar Loen Chan, Wing Ming Ho
Hungary	Tibor Csozsi, Laszlo Landherr, Zoltan Novak, Zsuzsanna Papai, Robert Poka, Istvan Sipocz
India	Paul Devinder, Lovenish Goyal, Sudeep Gupta, Radheshyam Naik, Tushar Patil, S.P. Somashekhar
Israel	Ilan Bruchim, Svetlana Kovel, Anca Leibovici, Ora Rosengarten, Tamar Safra
Japan	Wataru Yamagami, Junzo Hamanishi, Yuichi Imai, Nobuhiro Kado, Shoji Kamiura, Hienori Kato, Eiji Kondo, Wataru Kudaka, Takashi Matsumoto, Masahiko Mori, Tadaaki Nishikawa, Shin Nishio, Aikou Okamoto, Mayu Yunokawa, Masayuki Sekine, Toshiyuki Sumi, Hirokuni Takano, Kazuhiro Takehara
Lithuania	Birute Brasiuniene, Arturas Inciura, Goda Jonuskiene
Mexico	Jesus Elvis Cabrera Luviano, Adriana Dominguez-Andrade, Raquel Gerson-Cwilich, Carlos Hernandez Hernandez, Jesus Lopez Hernandez, Jose Luis Martinez Lira, Jaime Esteban Navarrete Aleman, Jessica Reyes Contreras, Vanessa Rosas Camargo

(continued in next column)

TABLE A1. DUO-E Investigators (continued)

Country	Principal Investigator
Poland	Wieslawa Bednarek, Dagmara Klasa-Mazurkiewicz, Tomasz Kubiawski, Piotr Potemski, Magdalena Sikorska
Republic of Korea	Suk-Joon Chang, Sook Hee Hong, Sokbom Kang, Byoung-Gie Kim, Jan-Weon Kim, Yong Man Kim, Jung-Yun Lee, Sang Young Ryu, Yong Jung Song
Russia	Dmitriy Kirtbaya, Julia Kreyntina, Alla Lisjanskaya, Yulia Makarova, Rashida Orlova, Albert Pirmagomedov, Valeria Saevets, Sufia Safina, Pavel Skopin, Alexandra Tyulyandina
Singapore	Sheow Lei Lim, Lynette Ngo Su Mien, David Tan Shao Peng, Lay Tin Soh
Spain	Jesus Alarcon Company, Pilar Barretina, Purificacion Estevez-Garcia, Isaura Fernandez Perez, Fernando Galvez, Yolanda Garcia, Marta Gil-Martin, Jeronimo Martinez, Andres Redondo-Sanchez
United States	Charles Anderson, Tara Berman, Stephanie Blank, William Bradley, James Burke, Fabio Cappuccini, Michael Carney, Setsuko Chambers, Lee-May Chen, Hye Sook Chon, Joseph de la Garza, Stephen Depasquale, Paul DiSilvestro, Babak Edraki, Evelyn Fleming, Jenny Fox, Michael Gold, Mary Gordinier, Michael Guy, Ellen Hartenbach, Chisten Haygood, Scott Jordan, Larry Kilgore, Young Kim, Joseph Lucci, Michael McCollum, Michael Mchale, Kristi McIntyre, Mark Messing, Eirwen Miller, Kathleen Moore, John Moroney, Michaela Onstad, Taylor Ortiz, Sobia Ozair, Kathryn Pennington, Krista Pfaendler, Anna Priebe, Terri Pustilnik, Kimberly Resnick, Peter Rose, Erin Salinas, Sudarshan Sharma, Urszula Sobol, Pamela Soliman, David Starks, Michael Sundborg, Eleonora Teplinsky, Jessica Thomes-Pepin, Todd Tillmanns, David Warshal, Shannon N. Westin, Thomas Woliver