

Autopsy relevance determining hemochromatosis

Case report

Sigitas Chmieliauskas, PhD^{a,b,*}, Dalius Banionis, MD^a, Sigitas Laima, PhD^{a,b}, Gerda Andriuskeviciute, MD^b, Sandra Mazeikiene, PhD^{a,b}, Jurgita Stasiuniene, PhD^a, Algimantas Jasulaitis, PhD^a, Sonata Jarmalaite, PhD^c

Abstract

Rationale: Hemochromatosis is a disorder, associated with an abnormal accumulation of iron leading to toxic organ damage. Clinical symptoms develop during a long period of time, thus, determining accidental or late diagnosis, usually when complications are evident.

Patient concerns: A 53-year-old man was brought to the emergency unit with symptoms of hypovolemic shock without any apparent cause, which ultimately led to multiple organ failure, severe metabolic acidosis.

Diagnoses: The final diagnosis of hemochromatosis was determined after the autopsy.

Interventions: Abnormal findings included a black-grayish pancreas, without any surrounding tissue reaction, and a dilated congestive cardiomyopathy. Histological findings revealed significant hemosiderin deposits in the internal organs, which were more distinct in the pancreas, liver, and kidneys.

Outcomes: Patient death in less than 12 hours.

Lessons: The necessity of a genetic examination after the autopsy, regarding this case was undeniable, especially focusing on the first-degree relatives, helping to diagnose and prescribe an adequate and early treatment.

Abbreviations: ALT = alanine aminotransferase, APTT = Partial thromboplastin time, AST = aspartate aminotransferase, BMI = body mass index, GCS = Glasgow coma scale, H = hemochromatosis, INR = international normalized ratio, PT = prothrombin time, SPA = Stago prothrombin assay, WBC = white blood cells.

Keywords: forensic medicine, hemochromatosis, iron storage disease, pathology

1. Introduction

Primary hemochromatosis (H) is an autosomal recessive genetic disease related to the *HFE* gene. Multiple studies have shown that most of the patients who had phenotypically expressed hemochromatosis had C282Y (80%) and H63D gene mutations.^[1–3]

Secondary hemochromatosis is usually caused by the disorders of erythropoiesis and multiple blood transfusions. Macrophages damage transfused erythrocytes, releasing iron from hemoglobin, causing its accumulation in the body.^[4,5]

Hereditary hemochromatosis is the most common inherited liver disease among the white population and one of the most common autosomal recessive genetic disorders. The prevalence of hereditary

hemochromatosis is high all over the world, especially in the Northern Europe, with 1 out of 220 to 250 having the disorder.^[6,7]

Despite the 30% discrepancy between clinical and pathological diagnoses in Europe and the decreasing number of performed autopsies,^[8–13] cases of clinically unsuspected conditions, which are revealed after postmortem examination, have been published after various studies have been completed.^[14–16] Since hemochromatosis is difficult to diagnose due to the rapid internal organ dysfunction development, autopsy remains one of the main rare condition identifying methods.

2. Materials and methods

This case report was approved by the Ethics Committee of Republican Vilnius University hospital. The patient signed the informed consents. An analysis was performed, in order to evaluate the data from the State Forensic Medicine Service, focusing on full forensic pathology autopsies between 2010 and 2016. In 2010, the number of performed autopsies was 7395, accounting for 17.3% of all deaths that year. In 2016, the number of performed autopsies was 5873, accounting for 14.3% of all deaths that year. During this period, there was only one case of hemochromatosis in Lithuania diagnosed after the postmortem examination. Toxicology tests were performed. Histological findings were analyzed using Perls' Prussian Blue reaction, in order to detect iron accumulation in tissues. A descriptive method was used, while reviewing literature focusing on hemochromatosis.

The Perls' Prussian Blue reaction consists of several stages. Firstly, the sections are plunged into distilled water. Secondly, the mixture of ferrocyanide and hydrochloric acid is applied for 10 minutes, following a continuous wash in distilled water for 5 minutes. A counterstain with filtered neutral red stain is applied for 1 minute with a rinse in distilled water afterward. Finally, a

Editor: N/A.

The authors have no conflicts of interest to disclose.

^a Department of Pathology, Forensic Medicine and Pharmacology, Institute of Biomedical Sciences of the Faculty of Medicine of Vilnius University, ^b State Forensic Medicine Service, ^c Faculty of Natural Sciences, Vilnius University, Vilnius, Lithuania.

* Correspondence: Sigitas Chmieliauskas, Department of Pathology, Forensic Medicine and Pharmacology, Institute of Biomedical Sciences of the Faculty of Medicine of Vilnius University, Vilnius, M. K. Ciurlionio Street 21/27, Lithuania (e-mail: sigitas.chmieliauskas@mf.vu.lt).

Copyright © 2017 the Author(s). Published by Wolters Kluwer Health, Inc. This is an open access article distributed under the terms of the Creative Commons Attribution-Non Commercial License 4.0 (CCBY-NC), where it is permissible to download, share, remix, transform, and buildup the work provided it is properly cited. The work cannot be used commercially without permission from the journal.

Medicine (2017) 96:49(e8788)

Received: 25 August 2017 / Received in final form: 27 October 2017 /

Accepted: 27 October 2017

<http://dx.doi.org/10.1097/MD.00000000000008788>

quick dehydration in absolute alcohol is being performed. If ferric salts are present, they become evident in dark blue color, nuclei—red, erythrocytes—yellow.

Technical points: a known positive control section must be used; neutral buffered formalin was used; red background staining results if the neutral red stain is applied directly from tap water; differentiation of neutral red staining is achieved during dehydration.

Reagent formula: aq hydrochloric acid (analytical reagent grade); aq potassium ferrocyanide (analytical reagent grade); neutral red stain: neutral red (CI 50040) 1g; distilled water 100 mL; glacial acetic acid 1mL. Dissolve the dye in the distilled water, add the acid, mix and filter.

3. Case

A 53 years old male, of 171 cm height and 75 kg weight (BMI 24.6) was hospitalized in the intensive care unit of Republican Vilnius University hospital in a severe general condition, due to acute abdominal pain and episodes of hematemesis continuing for 3 days. Other clinical features included: 13 points on Glasgow coma scale (GCS), heart rate of 155 beats per minute, arterial blood pressure 100/60 mm Hg, anuria was present. The abdomen ultrasound showed hepatomegaly. The laboratory test results exposed blood leukocytosis, liver and kidney insufficiency, electrolyte imbalance, hipocoagulation, and metabolic acidosis (Table 1). The further disease progression was rapid and uncontrollable. After 10 minutes hospitalization, the patient's condition became critical—intubation and lung ventilation were required. The blood pressure dropped to 70/40 mm Hg, resulting in tachycardia of 172 beats per minute. After nasogastric tube insertion, a clear slightly reddish liquid was received. Bradycardia occurred 45 minutes later, leading to unsuccessful cardiopulmonary resuscitation.

The diagnosis of poisoning by unspecified substance was formulated by the hospitals toxicologist. The cause of death remained unclear, resulting in the full autopsy being performed.

Table 1

Laboratory tests results at hospitalization.

Laboratory tests	Results	Normal range
WBC	16.3 × 10 ⁹ /L	4.0–10.0 × 10 ⁹ /L
Hb	119 g/L	140–175 g/L
K	5.8 mmol/L	3.5–5.1 mmol/L
Na	134 mmol/L	135–145 mmol/L
Cl	95.4 mmol/L	98–107 mmol/L
AST	717 U/L	8–40 U/L
ALT	1351 U/L	≤ 52 U/L
Total bilirubin	171 μmol/L	5–17 μmol/L
Direct bilirubin	37.4 μmol/L	0–8.6 μmol/L
APTT	216 s	26–45 s
SPA	6%	77–120%
INR	6.3	0.8–1.2
Fibrinogen	0.3 g/L	1.8–3.5 g/L
D-dimer	200,000 μg/L	< 250 μg/L
Arterial blood pH	6.975	7.35–7.45
Arterial blood PaCO ₂	36.4 mm/Hg	35–45 mm/Hg
Arterial blood PaO ₂	21.5 mm/Hg	83–108 mm/Hg
Arterial blood lactate	15 mmol/L	0–2.4 mmol/L
Creatinine	194 μmol/L	27–115 μmol/L
Urea	134 mmol/L	1.8–8.3 mmol/L
Glucose	3.5 mmol/L	<5.6 mmol/L

APTT=partial thromboplastin time, SPA = stago protrombin assay, INR=international normalized ratio, AST=aspartate aminotransferase, ALT=alanine aminotransferase, WBC=white blood cells.

Table 2

The autopsy data of heart.

Autopsy data	Results	Normal range
Heart weight	495 g	340 ± 30 g
Circumference of pulmonary trunk	83 mm	65–77 mm
Circumference of tricuspid valve	121 mm	93–120 mm
Circumference of aortic valve	77 mm	64–76 mm
Circumference of mitral valve	113 mm	95–110 mm
The distance from tricuspid valve to right ventricle apex	82 mm	65–81 mm
The distance from right ventricle apex to pulmonary valve	98 mm	75–93 mm
The distance from mitral valve to left ventricle apex	90 mm	75–93 mm
The distance from left ventricle apex to aortic valve	99 mm	76–97 mm
The muscle weight of the left heart ventricle*	150 g	103 ± 13 g
The muscle thickness of the left heart ventricle (in three places)	18–16–10 mm	14.6–12.8–5.8 mm
The muscle weight of the right heart ventricle*	90 g	49 ± 6 g
The muscle thickness of the right heart ventricle (in three places)	3–2.5–1.5 mm	3.2–1.7–1.0 mm
The muscle weight of the septum*	95 g	57 ± 8 g

* Without fat layer.

During external evaluation mechanical injuries were absent. A slight, bronze skin hyperpigmentation of the face and hands was evident.

3.1. Internal autopsy findings

During the internal examination a congestive cardiomyopathy was discovered (Table 2). Further pathological findings included atherosclerotic plaques of the coronary arteries with a 50% stenosis of the lumen, myocardial fibrosis, black-greyish, rigid pancreas without any surrounding tissues reaction (Fig. 1), lung, and brain edema. The liver, kidneys, and bowel demonstrated no macroscopically evident pathology.

The toxicology tests were completed and excluded clinically suspected poisoning.

Additional histological findings showed significant hemosiderin deposits in the cardiomyocytes (Fig. 2A), pancreas acinar cells (Fig. 2B), hepatocytes (Fig. 2C), and renal tubular epithelium (Fig. 2D).

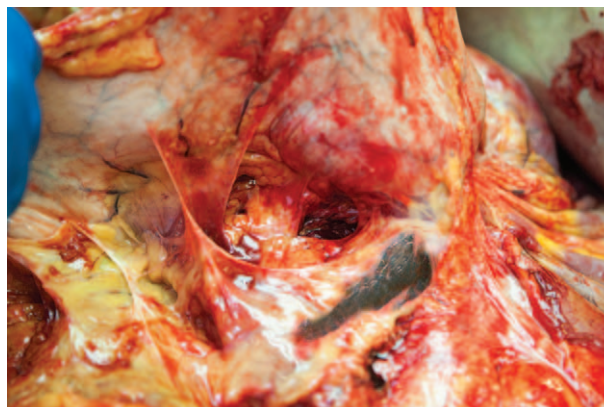


Figure 1. Black-greyish, rigid pancreas.

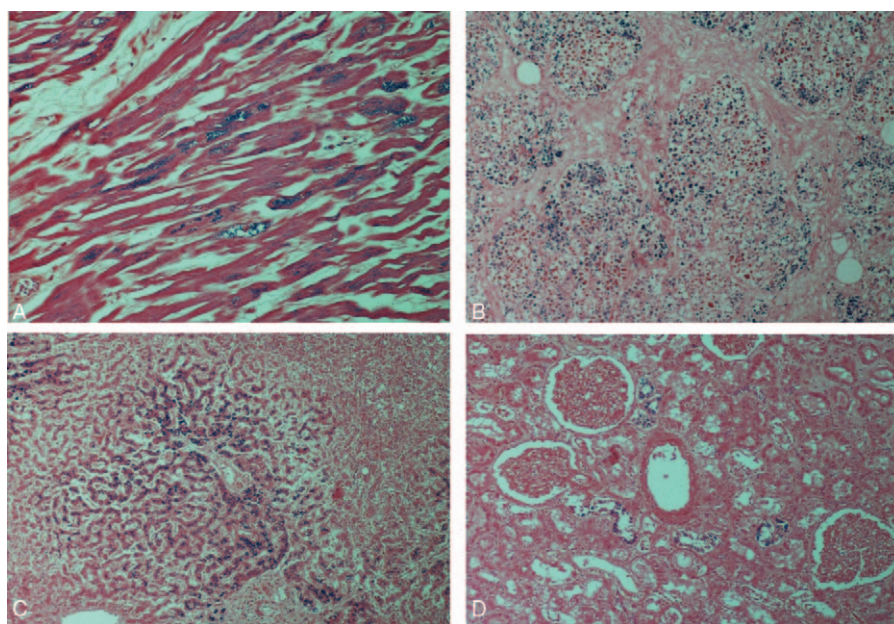


Figure 2. Deposition of hemosiderin.

The diagnosis of the main disease of undetermined hemochromatosis was exposed relying on the postmortem examination results. The complications included congestive cardiomyopathy, metabolic acidosis, and multiple organ dysfunction syndrome.

The first-degree relatives of the deceased have been informed about the nature of the disease, inheritance aspects, and the necessity of a genetic evaluation.

4. Diagnostics

4.1. Laboratory diagnostics

The disease is often diagnosed accidentally—during a prophylactic examination, when elevated blood iron level is detected. Serum transferrin saturation and serum ferritin are the 2 key indicator tests detecting iron overload. Serum transferrin saturation is meant to measure the amount of iron bound to a protein (transferrin) which carries iron in the blood. Transferrin saturation values greater than 45% are considered being high. Serological iron markers are widely available and informative, when no symptomatology is evident.^[2,3,6]

4.2. Genetic examination

Detection of hemochromatosis-associated C282Y and H63D mutations is conducted to confirm the diagnosis.^[2,3,6,7] Genetic evaluation is recommended if serum ferritin or serum transferrin saturation is abnormal. The American Association for the Study of Liver Diseases suggests a checkup for the selected patients, whose first-degree relatives suffered from hereditary hemochromatosis, associated with *HFE* gene mutation, including laboratory and genetic tests, in order to diagnose and apply an early treatment of the condition.^[6]

4.3. Liver and skin biopsy

The liver biopsy is recommended for homozygotes with a clinically evident liver disease, when serum ferritin is greater than

1000 ng/mL, and particularly for those older than 40 years, with other risk factors causing liver disease. Liver biopsy should also be considered as compound of C282Y gene mutation associated heterozygotes with elevated TS, particularly those who have had abnormal liver enzyme levels or clinical evidence of liver disease.^[2,6]

5. Discussion

Hereditary hemochromatosis is usually asymptomatic until the middle age is reached. Hemochromatosis becomes apparent after the age of 40 in men and after the age of 50 in women. This peculiarity can be explained by regarding menstruations as a physiological blood loss, which increases the rate of iron removal from the body. Hemochromatosis can be characterized by a classic triad: liver cirrhosis, diabetes mellitus, and skin bronzing or hyperpigmentation.^[5]

5.1. Liver disease

Iron accumulates in the hepatic cells, which leads to hepatomegaly, fibrosis, and cirrhosis. Hepatocellular carcinoma along with cirrhosis could be a complication of hereditary hemochromatosis.^[4,17,18]

5.2. Diabetes mellitus

Iron overload is a risk factor for diabetes mellitus development, which occurs in 13–22% of people who have hereditary hemochromatosis.^[19]

5.3. Heart failure

The presence of free iron in biological systems can lead to the rapid formation of damaging reactive oxygen metabolites. These metabolites can produce DNA cleavage, impair protein synthesis, and impair cell integrity and cell proliferation, leading to cardiomyocyte necrosis.^[20,21,22]

5.4. Osteoporosis

Around 25%–50% of patients are diagnosed with osteoporosis. It usually emerges due to the damage of other organs, such as hypogonadism and advanced liver disease.^[23]

5.5. Skin bronzing or hyperpigmentation

A combination of iron deposits and melanin causes the skin to become bronzed or hyperpigmented, which is typical during the late stages of the disease for 90% of patients.^[24]

The most common discrepancies between clinical and forensic diagnoses happen due to the clinical diagnosis being ultimately determined false, which may be influenced by several factors. The objective factors include: the short-term stay in the hospital, the severity of the patients' condition. The subjective factors are: an inadequate anamnesis data evaluation and patient examination, an incorrect assessment of clinical data, and the inaccurate evaluation of the test results, a wrong consultant's conclusion, and an incorrect formulation of the final diagnosis.

6. Conclusion

A diagnosis of hemochromatosis must be suspected after finding a pathological, black-greyish pancreas during an autopsy. A histological evaluation using Pearls Prussian blue staining must be performed. The necessity of a genetic examination is undeniable, when a hemochromatosis positive diagnosis is formulated, especially focusing on the first-degree relatives, helping to diagnose and prescribe an adequate and early treatment.

References

- [1] Feder JN, Gnirke A, Thomas W, et al. A novel MHC class I-like gene is mutated in patients with hereditary haemochromatosis. *Nat Genet* 1996;13:399–408.
- [2] Kanwar P, Kowdley KV. Diagnosis and treatment of hereditary hemochromatosis: an update. *Expert Rev Gastroenterol Hepatol* 2013;7:517–30.
- [3] Santos PC, Krieger JE, Pereira AC. Molecular diagnostic and pathogenesis of hereditary hemochromatosis. *Int J Mol Sci* 2012;13:1497–511.
- [4] Deugnier Y, Turlin B. Pathology of hepatic iron overload. *World J Gastroenterol* 2007;13:4755–60.
- [5] Kremastinos DT, Farmakis D. Iron overload cardiomyopathy in clinical practice. *Circulation* 2011;124:2253–63.
- [6] Bacon BR, Adams PC, Kowdley KV, et al. American Association for the Study of Liver Diseases. Diagnosis and management of hemochromatosis: 2011 practice guideline by the American Association for the Study of Liver Diseases. *Hepatology* 2011;54:328–43.
- [7] Ulvik RJ. The liver in haemochromatosis. *J Trace Elem Med Biol* 2015;31:219–24.
- [8] Coradazzi AL, Morganti ALS, Montenegro MRG. Discrepancies between clinical diagnoses and autopsy findings. *Braz J Med Res* 2003;36:385–91.
- [9] Spiliopoulou C, Papadodima S, Kotakidis N, et al. Clinical diagnoses and autopsy findings. A retrospective analysis of 252 cases in Greece. *Arch Pathol Lab Med* 2005;129:210–4.
- [10] Royal College of Pathologists of Australasia Autopsy Working Party. The decline of the hospital autopsy: a safety and quality issue for healthcare in Australia. *Med J Aust* 2004;150:281–5.
- [11] Chariot P, Witt K, Pautot V. Declining autopsy rate in a French hospital: physician's attitudes to the autopsy and use of autopsy material in research publications. *Arch Pathol Lab Med* 2000;124:739–45.
- [12] Burton EC, Nemetz PN. Medical error and outcomes measures: where have all the autopsies gone? *Med Gen Med* 2000;2:E8.
- [13] Wood MJ, Guha AK. Declining clinical autopsy rates versus increasing medicolegal autopsy rates in Halifax, Nova Scotia. *Arch Pathol Lab Med* 2001;125:924–30.
- [14] Combes A, Mokhtari M, Couvelard A, et al. Clinical and autopsy diagnoses in the intensive care unit: a perspective study. *Arch Intern Med* 2004;164:389–92.
- [15] Vougiouklakis T, Fragkouli K, Mitselou A, et al. A comparison of the provisional clinical diagnosis of death with autopsy findings. *Rom J Leg Med* 2011;19:177–82.
- [16] Gutierrez PS, Brito Td, Lopes MB, et al. The value of necropsy in quality control of medical diagnosis—the gold standard for years to come. *Clinics* 2009;64:161–2.
- [17] Zarrilli F, Elce A, Scorza M, et al. An update on laboratory diagnosis of liver inherited diseases. *Biomed Res Int* 2013;2013:697–940.
- [18] Kew MC. Hepatic iron overload and hepatocellular carcinoma. *Liver Cancer* 2014;3:31–40.
- [19] Vantyghem MC, Dobbelaere D, Mention K, et al. Endocrine manifestations related to inherited metabolic diseases in adults. *Orphanet J Rare Dis* 2012;7:11.
- [20] Bejar D, Colombo PC, Latif F, et al. Infiltrative cardiomyopathies. *Clin Med Insights Cardiol* 2015;9:29–38.
- [21] Cheng CF, Lian WS. Prooxidant mechanisms in iron overload cardiomyopathy. *Biomed Res Int* 2013;740573.
- [22] Kondur AK, Li T, Vaitkevicius P, et al. Quantification of myocardial iron overload by cardiovascular magnetic resonance imaging T2* and review of the literature. *Clin Cardiol* 2009;32:55–9.
- [23] Husar-Memmer E, Stadlmayr A, Datz C, et al. HFE-related hemochromatosis: an update for the rheumatologist. *Curr Rheumatol Rep* 2014;16:393.
- [24] Sredoja Tišma V, Bulimbašić S, Jaganjac M, et al. Progressive pigmented purpuric dermatitis and alopecia areata as unusual skin manifestations in recognizing hereditary hemochromatosis. *Acta Dermatovenerol Croat* 2012;20:181–6.