


IN THE ERA OF THE LEEDS PROTOCOL: A SYSTEMATIC REVIEW AND A META-ANALYSIS ON THE EFFECT OF RESECTION MARGINS ON SURVIVAL AMONG PANCREATIC DUCTAL ADENOCARCINOMA PATIENTS

B. Kurlinkus^{1*}, R. Ahola^{2*} , E. Zwart³, A. Halimi⁴, B. S. Yilmaz⁵, G. O. Ceyhan⁵, J. Laukkarinen^{2,6}

¹Clinic of Gastroenterology, Nephrourology and Surgery, Faculty of Medicine, Vilnius University, Vilnius, Lithuania

²Department of Gastroenterology and Alimentary Tract Surgery, Tampere University Hospital, Tampere, Finland

³Department of Surgery, Cancer Center Amsterdam, Amsterdam UMC, location VUmc, Amsterdam, The Netherlands

⁴Pancreas Unit, Department of Upper Gastrointestinal Diseases, Karolinska University Hospital, Stockholm, Sweden

⁵Department of General Surgery, HPB-Unit, School of Medicine, Acibadem Mehmet Ali Aydinlar University, Istanbul, Turkey

⁶Faculty of Medicine and Health Technology, Tampere University, Tampere, Finland

ABSTRACT

Background and Aims: A positive resection margin is considered to be a factor associated with poor prognosis after pancreatic ductal adenocarcinoma resection. However, analysis of the resection margin is dependent on the pathological slicing technique. The aim of this systematic review and meta-analysis was to study the impact of resection margin on the survival of pancreatic ductal adenocarcinoma patients whose specimens were analyzed using the axial slicing technique.

Material and Methods: A systematic search in the PubMed, Cochrane, and Embase datasets covering the time period from November 2006 to January 2019 was performed. Only studies with axial slicing technique (Leeds Pathology Protocol or Royal College of Pathology Protocol) were included in the final database. Meta-analysis between the marginal distance and survival was performed with the Inverse Variance Method in RevMan.

Correspondence:

Reea Ahola, MD, PhD
Department of Gastroenterology and Alimentary Tract Surgery
Tampere University Hospital, P.O. Box 2000
Tampere FI-33521
Finland
Email: reea.ahola@live.fi

*These authors have contributed equally to this manuscript.

Scandinavian Journal of Surgery
2020, Vol. 109(1) 11–17
© The Finnish Surgical Society 2020



Article reuse guidelines:
sagepub.com/journals-permissions
DOI: 10.1177/1457496920911807
journals.sagepub.com/home/sjs



Results: The systematic search resulted in nine studies meeting the inclusion criteria. The median survival for a resection margin 0 mm ranged from 12.3 to 23.4 months, for resection margin <0.5 mm 16 months, for resection margin <1 mm ranged from 11 to 27.5 months, for resection margin <1.5 mm ranged from 16.9 to 21.2 months, and for resection margin >2 mm ranged from 53.9 to 63.1 months. Five studies were eligible for meta-analysis. The pooled multivariable hazard ratio favored resection margin ≥ 1 mm (hazard ratio: 1.32 and 95% confidence interval: 1.03–1.68, $p=0.03$).

Conclusion: Resection margins ≥ 1 mm seem to lead to better survival in pancreatic ductal adenocarcinoma patients than resection margin <1 mm. However, there is not enough data to evaluate the effect of oncologic therapy or to analyze the impact of other resection margin distances on survival.

Key words: Carcinoma; pancreatic ductal; pancreatic cancer; pancreatic neoplasms; pancreatectomy; resection margin; analysis; survival; clinical pathology

INTRODUCTION

A study of 28 European Union (EU) countries predicts that pancreatic cancer may become the third leading cause of cancer-related death in the EU after lung and colorectal cancers, in contrast to stable or even declining trends for most cancer types (1). At the moment, the best prognosis can be achieved by combining surgery and oncological therapy. Resection margin (RM) status is one of the most important factors influencing survival. Despite this, controversy exists as to what should be considered to be complete clearance of a pancreatic tumor. The International Study Group of Pancreatic Surgery (ISGPS) (2), Royal College of Pathologists (3), and the College of American Pathologists (CAP) (4) suggested an RM of at least 1 mm, while the International Union Against Cancer (UICC) (5) claims that an RM of 0 mm would suffice. In contrast to this, some authors even suggest that extending this cutoff to 1.5 or 2 mm (6–8) could significantly improve survival. Earlier studies (9, 10) reporting the effect of pancreatic cancer tumor-free RM have included a variety of different pathologic techniques. To study the impact of RM on survival among pancreatic ductal adenocarcinoma (PDAC) patients, we conducted a systematic review and a meta-analysis including only studies analyzing pathological samples with axial slicing techniques: Leeds Pathology Protocol (LEEPP) or Royal College of Pathology Protocol (RCP).

MATERIALS AND METHODS

DATA SOURCES AND SEARCH STRATEGY

A systematic search in MEDLINE, Embase, and the Cochrane library was conducted in collaboration with a medical librarian (search strategy in Supplemental Material 1). An additional search was performed by conducting a review of the references in the articles retrieved. The search included studies published between November 2006 and January 2019. Studies describing RM length and its relation to the survival of patients with pancreatic cancer were included. Both MeSH terms (pancreatic neoplasms, pancreaticoduodenectomy, pancreatectomy, pancreaticojejunostomy)

and free text words concerning pancreatic tumors and resections were used as search words. We specifically avoided adding a search term “margin” to harvest all studies in which RM length could have been one of the outcomes. This systematic review followed the Preferred Reporting Items for Systematic Reviews and Meta-Analyses (PRISMA) (11).

STUDY SELECTION

Search results were independently reviewed by two authors (R.A. and B.K.). Any disagreement over eligibility was resolved through discussion. Inclusion criteria were curative surgery for PDAC performed, length of tumor-free margin reported, patients older than 18 years, follow-up of at least 1 year available, survival data, and axial slicing technique used for pathological report (LEEPP or RCP) included. To minimize heterogeneity between the studies and to ensure more clinically significant results, we also used the following exclusion criteria: studies with combined results for other periampullary cancers (ampullary, distal bile duct, and duodenal), unclear pathological assessment of margins, reviews or meta-analyses, small case series (≤ 6 patients), published as abstracts only, and non-English-language studies. The corresponding authors of the studies included were sent an email to receive additional results or data for this meta-analysis.

RISK FOR BIAS AND PUBLICATION BIAS EVALUATION

The Newcastle-Ottawa Scale (NOS, Supplemental Material 2) was used to assess the quality of the studies included. The evaluation was performed by three authors (R.A., B.K., E.Z.).

STATISTICAL ANALYSIS

Multivariate hazard ratio (HR) together with its 95% confidence interval (CI) was directly extracted from the text. HR pooled together according to different width of tumor-free margin was calculated using the Inverse Variance Random Effects Model and presented with

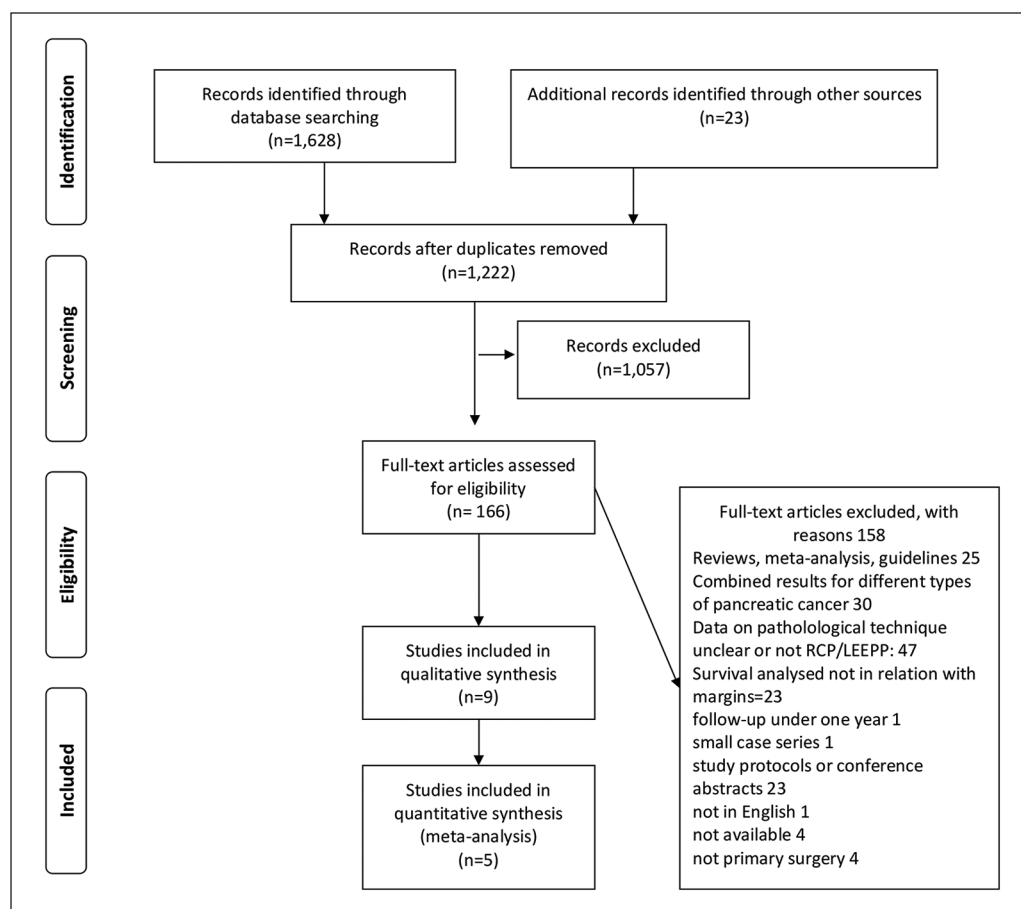


Fig. 1. The PRISMA flow chart of the data search.

Forest plots. A p -value less than 0.05 was considered statistically significant. A chi-square statistic was used to test the statistical heterogeneity. Heterogeneity between trials was evaluated with I^2 . All statistical analyses were performed in Review Manager 5.3 program (Cochrane Collaboration, Copenhagen, Denmark).

RESULTS

STUDY SELECTION

The search strategy yielded 1629 studies for further analysis. The studies represented a wide spectrum of published data on pancreatic resections of which most of did not focus on the issues analyzed in this study. Full texts of 166 studies were assessed, and 9 studies were included in the qualitative analysis. The most common exclusion criterion was unclear pathological assessment protocol (Fig. 1).

STUDY CHARACTERISTICS

Six of the studies included had used LEEPP for the evaluation of surgical specimens and three studies reported using RCP. All studies originated in Europe. Two studies (Delpero et al. (12) and Ghaneh et al. (6)) were based on a multicentre database. Most of the patients had T3 tumor and 18%–37% of the tumors

were poorly differentiated but information of those were also lacking in some of the included articles. The proportion of adjuvant therapy varied between the studies from 27% to 96%. The use of neoadjuvant therapy (NAT) varied from 0% to 21%. Data on adjuvant therapy or NAT were not reported in all studies. All studies reported univariate analyses for survival, and one study (Ghaneh et al. (6)) also reported disease-free survival in relation to margin lengths. In addition, Delpero et al. (12) reported disease-free survival of the whole cohort. Five studies reported multivariable HRs for survival in relation with at least one margin width and were included in the quantitative meta-analysis (Fig. 2).

SURVIVAL

Median survival varied 12.3–23.4 months for patients having a microscopic tumor at the margin (0-mm margin). One study reported a median survival of 16 months for patients with a margin under 0.5 mm. Eight studies demonstrated a median survival of 11–27.5 months for patients having a tumor-free margin under 1 mm. Nine studies reported median survivals of 17.3–53.9 months for over 1-mm margin (Table 1). Two studies reported median survivals of 16.9–21.2 months for a margin under 1.5 mm, and the same studies reported median survival of 53.9 and

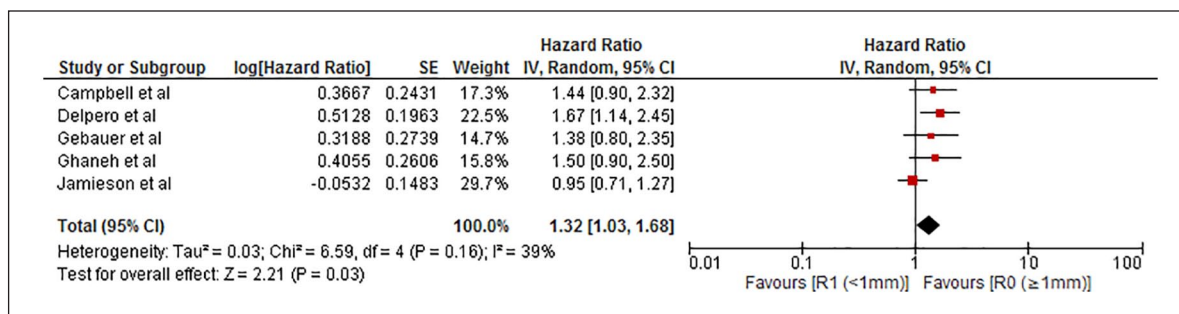


Fig. 2. Meta-analysis of the eligible hazard ratios on 1-mm resection margin (RM).

TABLE 1
 List of included studies and study characteristics.

Studies	Design	Country	Study period	Total	Pathologic protocol	Age	T3 (%)	Gr 3 (%)	AT (%)	NAT (%)
Campbell et al. (13)	Prospective database	United Kingdom	1997–2007	163	RCP	Median: 66 y	83	33	27	NR
Delpero et al. (12)	Prospective multicentre study	France	2008–2010	142	LEEPP	Median: 63 y	77	18	NR	21
Gebauer et al. (14)	Prospective database	Germany	2007–2011	118	LEEPP	>65 y: 28%–37%	49–50	20	NR	NR
Ghaneh et al. (6)	Prospective multicentre database	Europe	2007–2009	1151	LEEPP	Median: 62 y	NR	22	96	0
Jamieson et al. (15)	Prospective database	United Kingdom	1996–2011	217	RCP	>65 y: 45%	90	31	47	1
John et al. (16)	Prospective database	United Kingdom	2003–2009	70	RCP	Median: 66 y	NR	37	NR	NR
Menon et al. (17)	Prospective database	United Kingdom	2003–2007	27	LEEPP	>65 y: 60%–68%	100	NR	NR	NR
Strobel et al. (18)	Prospective database	Germany	2006–2012	561	LEEPP	>70 y: 38%	96	33	84	4.3
Verbeke et al. (9)	Prospective database	Germany	1995–2003	102	LEEPP	Median: 66 y	92	NR	54	NR

RCP: Royal College of Pathologists; LEEPP: Leed's Pathological Protocol; AT: adjuvant therapy; NAT: neoadjuvant therapy; Gr: level of differentiation; NR: not reported; y: years.

63.1 months for patients having a RM over 1.5 mm. Two studies reported a median survival 15.1–63.6 months for a RM over 2 mm. An overview of the effect of margin length is shown in Fig. 3. Reported multivariate HRs are shown in Table 2. One study (18) reported multivariate HRs for RM ≥ 1 mm versus RM 0 mm (HR=0.73, CI: 0.54–0.98, $p=0.036$) and RM ≤ 1 versus 0 mm (HR: 0.71, CI: 0.54–0.95, $p=0.019$). The most of the HRs (five studies) were reported for the RM ≥ 1 mm. The pooled multivariable HR favored RM ≥ 1 mm (HR: 1.32 and 95% CI: 1.03–1.68, $p=0.03$).

DISEASE-FREE SURVIVAL

Ghaneh et al. (6) reported recurrence-free survival in relation to margin widths. They reported a median recurrence-free survival of 15.7 (14.3–17) months for tumor clearance over 1 mm, 14.5 (12.8–17.1) months for margin clearance under 1 mm, and 11.9 (10.9–13.3) months for 0-mm margin clearance.

DISCUSSION

RM status after curative surgery for PDAC is considered as one of the most crucial factors, influencing survival and in some centers serves as a selection criterion for different treatment modalities. In clinical practice, a tumor-free RM ≥ 1 mm is considered to be an R0 resection. Yet, controversy exists what would be the ideal margin clearance. The ratio of R0 and R1 resections in studies differs significantly from 20% to 85% R1 resections (7, 8, 15, 16, 19, 20), due to the different pathology protocols used for RM evaluation. So far, none of the published meta-analyses have considered this important aspect (21, 22). Therefore, we decided to include only studies evaluating pathological samples with the axial slicing technique (LEEPP or RCP) in our meta-analysis (9). Here, we could demonstrate that a RM >1 mm leads to a better prognosis compared to <1 mm, but the barely significant CI and the small amount of evidence on other margins hamper a comprehensive analysis on the role of the best RM.

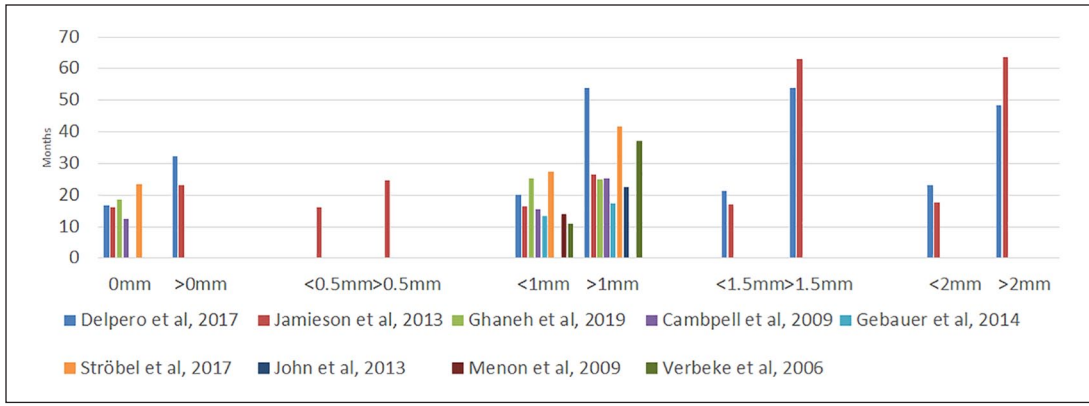


Fig. 3. The reported median survivals in relation to different resection margin (RM) cutoffs.

TABLE 2
Reported multivariate hazard ratios and p-values.

Margin cutoffs	Delpero et al. (12)	Jamieson et al. (15)	Ghaneh et al. (6)	Campbell et al. (13)	Gebauer et al. (14)	John et al. (16)
0.5 mm						
multivariate HR (CI)	NR	1.42 (1.02–1.99)	NR	NR	NR	NR
p	NR	0.039	NR	NR	NR	0.846
0 mm						
multivariate HR (CI)	1.1 (0.7–1.9)	NR	1.31 (1.093–0.566)	NR	NR	NR
p	0.623	NR	0.719	NR	NR	0.84
1 mm						
multivariate HR (CI)	1.5 (0.9–2.5)	1.67 (1.02–1.99)	0.95 (0.709–0.268)	1.443 (0.896–2.324)	0.727 (0.2425–1.244)	NR
p	0.106	0.009	0.003	0.132	0.245	NR
1.5 mm						
multivariate HR (CI)	1.5 (0.9–2.6)	2.75 (1.59–4.75)	NR	NR	NR	NR
p	0.101	<0.0001	NR	NR	NR	0.81
2 mm						
multivariate HR (CI)	1.2 (0.7–2.1)	2.66 (1.46–4.82)	NR	NR	0.429 (0.217–0.847)	NR
p	0.555	0.001	NR	NR	0.015	0.54

HR: hazard ratio; CI: confidence interval.

Menon et al. and Verbeke et al. did not report multivariate HRs or p-values. Ströbel et al. reported for special margins as reported in “Results” section.

Earlier studies demonstrated a wide range of R1 resection rates after PDAC surgery (7, 8, 19). More interestingly, these studies reported that their patients had R1 resection rates of less than 20%, but demonstrated local recurrence rates from 60% to 80%. These observations reveal that the true R1 proportion seems to be underestimated. Keeping this in mind, Verbeke et al. published in 2006 (9) an article describing the development of a new pathology protocol for the examination of pancreatoduodenectomy specimens (9). This involved multicolour margin staining, axial slicing, and extensive tissue sampling, which later came to be known as the LEEPP. This led to a higher overall R1 rate (85%) and a significant correlation of RM status with survival. At about the same time, the Royal College of Pathologists also published their pro-

col (3). These protocols are to the best of our knowledge essentially identical. Later, studies using these protocols all concluded higher rates of R1, ranging from 76% to 81% (13, 17, 20). Considering the diffuse growth pattern of PDAC and the high rates of local recurrence, these findings seem to be more accurate and reflect the aggressive biological behavior of PDAC.

A meta-analysis by Butturini et al. (23) did not identify RM status as a significant factor for survival and doubted the 1-mm cutoff value. Further trials showed no major differences in outcomes between resection with involved margin and resections in which the tumor was found within 1 mm of the RM (10, 13). This led to the “1 mm principle” for radical PDAC surgery, which was originally adopted from rectal cancer

surgery, where the distance of tumor-free circumferential margin was considered to have a significant association with reduced local recurrence rates (24, 25).

Verbeke et al. (26) compared the growth patterns of rectal and pancreatic tumors. They concluded that in PDAC the tumor is more dispersed, particularly on the periphery, and doubted that the 1-mm cutoff value would suffice. This was corroborated by other studies (14, 15, 27), which have shown that increasing RM could significantly improve survival. Chang et al. (27) contended with data from 1990 to 2007 that optimal long-term survival can only be achieved when the RM is more than 1.5 mm. Unfortunately, they did not define the pathological technique they used in the analysis which challenges the interpretation of the results. Considering these findings, it seems that dispersed cancer cells are very likely to remain after resection even though no tumor is present within 1 mm of the RM. This suggests that the R status might be a surrogate marker for PDAC aggressiveness, instead of indicating success of surgery. In addition, some of patients present metastasis early after pancreatic resection. This indicates that 1-mm tumor clearance might not be essential for PDAC.

In addition to RM and resection success, other factors are also associated with the prognosis. These factors include those detectable in pathological analysis (nodal status, tumor differentiation, size, vascular and perineural invasion), factors associated with the treatment process (operation volume, amount of blood lost, peri- and post-operative complications), oncological treatment given, and factors associated with the tumor biology of each individual patient (18, 20, 28–41). The studies included in our analysis concentrated on reporting histopathological and demographic features, and no data on patient's individual tumor biology or treatment processes were available. The ESPAC trials 1, 3, and 4 (39–41) have proven the benefits of adjuvant therapy for PDAC patients. However, the proportion adjuvant therapy or NAT administered varied in the studies included or was not reported. This as well as the fact that also patients after NAT were included in some of the studies may bias the results.

As pointed out, a uniform slicing technique of a pancreatic specimen is crucial for a standardized comparison of the surgical RMs between different studies. The time span of the data search in our study included all the years after the LEEPPs technique (after 2006), and searches were conducted in three different databases. Only studies which reported using a standardized axial slicing technique for pathological analysis (LEEPP or RCP) were included which is a strength in our study. However, only nine studies were eligible for the systematic review and five studies for the meta-analysis. Other studies did not use standardized axial slicing technique or did not report the method used for pathological analysis. Furthermore, we could not find studies evaluating patients' pancreatic RM after 2012 which would use one of these pathological methods. Imaging capabilities, surgical techniques, and oncological treatment have dramatically evolved since. All of this challenges the evaluation of the effect of margins on survival. Nevertheless, we consider a uniform slicing technique to be the most important factor, if the effect of RM on survival is studied. Moreover, the studies

reported a variety of background data, and especially the role of oncologic therapy stays unresolved in this analysis. Despite the careful inclusion of the studies, part of the data included patients also from the era before 2006. However, it was possible to pool HR for the most commonly used RM of 1 mm, but in total the evidence for the role of margins stays weak.

In conclusion, over 1-mm RM results in better survival than <1-mm margin. However, the impact of the RM, and moreover, that of other margin distances remain uncertain because of the variability of the patients characteristics in the studies. Especially, the role of adjuvant therapy stays unclear. Further studies are needed to evaluate the true effect of the margin clearance.

ACKNOWLEDGEMENTS

This study was conducted as a project of the 9th Pancreas 2000 education and research program funded by the Acibadem Mehmet Ali Aydinlar University, the Karolinska Institute, and the European Pancreatic Club/EPC. The authors thank Patrick Masonneuve for his professional guidance in statistics and Virginia Mattila for proofreading the manuscript.

DECLARATION OF CONFLICTING INTERESTS

The author(s) declared no potential conflicts of interest with respect to the research, authorship, and/or publication of this article.

FUNDING

The author(s) disclosed receipt of the following financial support for the research, authorship, and/or publication of this article: The authors appreciate the support and funding from Cancer Center Amsterdam Foundation, The Netherlands (CCA); the Lithuanian Gastroenterology Society, Lithuania; Mylan, The Netherlands; State Research Funding (VTR), Finland; and the Sigrid Jusélius Foundation, Finland. Funding had no involvement in the study design, data collection, data analysis, manuscript preparation, or publication decisions.

ORCID ID

R. Ahola  <https://orcid.org/0000-0002-9702-2729>

SUPPLEMENTAL MATERIAL

Supplemental material for this article is available online.

REFERENCES

1. Ferlay J, Partensky C, Bray F: More deaths from pancreatic cancer than breast cancer in the EU by 2017. *Acta Oncol* 2016;55 (9–10):1158–1160.
2. Bockhorn M, Uzunoglu FG, Adham M et al: Borderline resectable pancreatic cancer: A consensus statement by the International Study Group of Pancreatic Surgery (ISGPS). *Surgery* 2014;155(6):977–988.
3. Campbell F, Foulis AK, Verbeke CS: Dataset for the Histopathological Reporting of Carcinomas of the Pancreas, Ampulla of Vater and Common Bile Duct. The Royal College of Pathologists, London, 2010.

4. Washington K, Berlin J, Branton P et al: Protocol for the Examination of Specimens from Patients with Carcinoma of the Exocrine Pancreas. College of American Pathologists, Northfield, IL, 2017.
5. Sobin LH, Gospodarowicz MK, Wittekind C: International Union against Cancer: TNM Classification of Malignant Tumours, 7th ed. Wiley-Blackwell, Oxford, 2009.
6. Ghaneh P, Kleeff J, Halloran CM et al: The impact of positive resection margins on survival and recurrence following resection and adjuvant chemotherapy for pancreatic ductal adenocarcinoma. *Ann Surg* 2019;269:520–529.
7. Raut CP, Tseng JF, Sun CC et al: Impact of resection status on pattern of failure and survival after pancreaticoduodenectomy for pancreatic adenocarcinoma. *Ann Surg* 2007;246(1):52–60.
8. Van den Broeck A, Sergeant G, Ectors N et al: Patterns of recurrence after curative resection of pancreatic ductal adenocarcinoma. *Eur J Surg Oncol* 2009;35(6):600–604.
9. Verbeke CS, Leitch D, Menon KV et al: Redefining the R1 resection in pancreatic cancer. *Br J Surg* 2006;93:1232–1237.
10. Konstantinidis IT, Warshaw AL, Allen JN et al: Pancreatic ductal adenocarcinoma: Is there a survival difference for R1 resections versus locally advanced unresectable tumors? *Ann Surg* 2013;257(4):731–736.
11. Moher D, Shamseer L, Clarke M et al: Preferred reporting items for systematic review and meta-analysis protocols (PRISMA-P) 2015 statement. *Syst Rev* 2015;4:1.
12. Delpero JR, Jeune F, Bachelier P et al: Prognostic value of resection margin involvement after pancreaticoduodenectomy for ductal adenocarcinoma: Updates from a French prospective multicenter study. *Ann Surg* 2017;266(5):787–796.
13. Campbell F, Smith RA, Whelan P et al: Classification of R1 resections for pancreatic cancer: The prognostic relevance of tumour involvement within 1 mm of a resection margin. *Histopathology* 2009;55(3):277–283.
14. Gebauer F, Tachezy M, Vashist YK et al: Resection margin clearance in pancreatic cancer after implementation of the Leeds Pathology Protocol (LEEPP): Clinically relevant or just academic? *World J Surg* 2015;39:493–499.
15. Jamieson NB, Chan NII, Foulis AK et al: The prognostic influence of resection margin clearance following pancreaticoduodenectomy for pancreatic ductal adenocarcinoma. *J Gastrointest Surg* 2013;17(3):511–521.
16. John BJ, Naik P, Ironside A et al: Redefining the R1 resection for pancreatic ductal adenocarcinoma: Tumour lymph nodal burden and lymph node ratio are the only prognostic factors associated with survival. *HPB (Oxford)* 2013;15(9):674–680.
17. Menon KV, Gomez D, Smith AM et al: Impact of margin status on survival following pancreatoduodenectomy for cancer: The Leeds Pathology Protocol (LEEPP). *HPB (Oxford)* 2009;11(1):18–24.
18. Strobel O, Hank T, Hinz U et al: Pancreatic cancer surgery: The new R-status counts. *Ann Surg* 2017;265(3):565–573.
19. Kayahara M, Nagakawa T, Ueno K et al: An evaluation of radical resection for pancreatic cancer based on the mode of recurrence as determined by autopsy and diagnostic imaging. *Cancer* 1993;72(7):2118–2123.
20. Esposito I, Kleeff J, Bergmann F et al: Most pancreatic cancer resections are R1 resections. *Ann Surg Oncol* 2008;15:1651–1660.
21. Chandrasegaram MD, Goldstein D, Simes J et al: Meta-analysis of radical resection rates and margin assessment in pancreatic cancer. *Br J Surg* 2015;102(12):1459–1472.
22. Kim KS, Kwon J, Kim K et al: Impact of resection margin distance on survival of pancreatic cancer: A systematic review and meta-analysis. *Cancer Res Treat* 2017;49(3):824–833.
23. Butturini G, Stocken DD, Wente MN et al: Influence of resection margins and treatment on survival in patients with pancreatic cancer: Meta-analysis of randomized controlled trials. *Arch Surg* 2008;143(1):75–83; discussion 83.
24. Adam IJ, Mohamdee MO, Martin IG et al: Role of circumferential margin involvement in the local recurrence of rectal cancer. *Lancet* 1994;344(8924):707–711.
25. Birbeck KF, Macklin CP, Tiffin NJ et al: Rates of circumferential resection margin involvement vary between surgeons and predict outcomes in rectal cancer surgery. *Ann Surg* 2002;235(4):449–457.
26. Verbeke CS, Knapp J, Gladhaug IP: Tumour growth is more dispersed in pancreatic head cancers than in rectal cancer: Implications for resection margin assessment. *Histopathology* 2011;59(6):1111–1121.
27. Chang DK, Johns AL, Merrett ND et al: Margin clearance and outcome in resected pancreatic cancer. *J Clin Oncol* 2009;27(17):2855–2862.
28. Howard TJ, Krug JE, Yu J et al: A margin-negative R0 resection accomplished with minimal postoperative complications is the surgeon's contribution to long-term survival in pancreatic cancer. *J Gastrointest Surg* 2006;10(10):1338–1345; discussion 1345–1346.
29. Dusch N, Weiss C, Strobel P et al: Factors predicting long-term survival following pancreatic resection for ductal adenocarcinoma of the pancreas: 40 years of experience. *J Gastrointest Surg* 2014;18(4):674–681.
30. Paniccia A, Hosokawa P, Henderson W et al: Characteristics of 10-year survivors of pancreatic ductal adenocarcinoma. *JAMA Surg* 2015;150(8):701–710.
31. Winter JM, Cameron JL, Campbell KA et al: 1423 pancreaticoduodenectomies for pancreatic cancer: A single-institution experience. *J Gastrointest Surg* 2006;10(9):1199–1210; discussion 1210–1211.
32. Chen JWC, Bhandari M, Astill DS et al: Predicting patient survival after pancreaticoduodenectomy for malignancy: Histopathological criteria based on perineural infiltration and lymphovascular invasion. *HPB (Oxford)* 2010;12(2):101–108.
33. Mierke F, Hempel S, Distler M et al: Impact of portal vein involvement from pancreatic cancer on metastatic pattern after surgical resection. *Ann Surg Oncol* 2016;23(Suppl. 5):730–736.
34. Hempel S, Plodeck V, Mierke F et al: Para-aortic lymph node metastases in pancreatic cancer should not be considered a watershed for curative resection. *Sci Rep* 2017;7:7688.
35. Agalianos C, Gouvas N, Papaparaskeva K et al: Positive para-aortic lymph nodes following pancreatotomy for pancreatic cancer. Systematic review and meta-analysis of impact on short term survival and association with clinicopathologic features. *HPB (Oxford)* 2016;18(8):633–641.
36. van Rijssen LB, Narwade P, van Huijgevoort NCM et al: Prognostic value of lymph node metastases detected during surgical exploration for pancreatic or periampullary cancer: A systematic review and meta-analysis. *HPB (Oxford)* 2016;18:559–566.
37. Zhang J, Wolfgang CL, Zheng L: Precision immuno-oncology: Prospects of individualized immunotherapy for pancreatic cancer. *Cancers (Basel)* 2018;10(2):E39.
38. Saukkonen K, Hagstrom J, Mustonen H et al: Prognostic and diagnostic value of REG4 serum and tissue expression in pancreatic ductal adenocarcinoma. *Tumour Biol* 2018;40(3):1010428318761494.
39. Neoptolemos JP, Stocken DD, Dunn JA et al: Influence of resection margins on survival for patients with pancreatic cancer treated by adjuvant chemoradiation and/or chemotherapy in the ESPAC-1 randomized controlled trial. *Ann Surg* 2001;234(6):758–768.
40. Neoptolemos JP, Stocken DD, Bassi C et al: Adjuvant chemotherapy with fluorouracil plus folinic acid vs gemcitabine following pancreatic cancer resection: A randomized controlled trial. *JAMA* 2010;304(10):1073–1081.
41. Neoptolemos JP, Palmer DH, Ghaneh P et al: Comparison of adjuvant gemcitabine and capecitabine with gemcitabine monotherapy in patients with resected pancreatic cancer (ESPAC-4): A multicentre, open-label, randomised, phase 3 trial. *Lancet* 2017;389(10073):1011–1024.

Received: November 17, 2019

Accepted: February 3, 2020